



# St. Cloud Natural Areas Inventory and Planning Framework

## *2001 Addendum*

City of St. Cloud, Minnesota

SEH No. A-STCLD0103.00

January 2001



**SHORT ELLIOTT HENDRICKSON INC**

Multidisciplined.  
Single Source.

2001 Addendum  
St. Cloud Natural Areas Inventory and Planning Framework  
City of St. Cloud, Minnesota

SEH No. A-STCLD0103.00

January 2001

Short Elliott Hendrickson Inc.  
3535 Vadnais Center Drive  
St. Paul, MN 55110-5196  
651.490.2000

---

# Table of Contents

Title Page	
Table of Contents	
	<b>Page</b>
<b>Introduction .....</b>	<b>1</b>
Objectives of Study .....	1
Report Contents .....	1
<b>Inventory and Site Priority .....</b>	<b>2</b>
Information Review .....	2
Site Inventory and Mapping .....	3
Natural Areas GIS Overlay .....	3
<b>Update of Natural Areas in the St. Cloud Area .....</b>	<b>3</b>
Distribution of Natural Areas .....	3
Types of Natural Areas .....	4
Quality and Stewardship of Natural Areas .....	4
<b>Concluding Statement .....</b>	<b>5</b>

## List of Tables

Inventory Site determination .....	2
------------------------------------	---

## List of Figures

Figure 1 - St. Cloud, MN Natural Areas
Figure 2 - St. Cloud, MN Natural Areas -2000 Study

## List of Appendices

Appendix A St. Cloud Natural Areas Inventory Database - Sorted by Site
St. Cloud Natural Areas Inventory Database - Sorted by Priority

SEH is a registered trademark of Short Elliott Hendrickson Inc.

# St. Cloud Natural Areas Inventory and Planning Framework

## 2001 Addendum

Prepared for City of St. Cloud, Minnesota

---

### Introduction

#### Objectives of Study

The City of St. Cloud's Comprehensive Plan addresses environmental protection concerns and issues, particularly within growth corridors. Development projections contemplate significant new development occurring over the next 20 years. It is the City's desire to facilitate development in the most harmonious and environmentally sensitive manner. As an addendum to the 1995 study of natural areas in the St. Cloud area, additional annexed areas not previously inventoried were reviewed in 2000 for significant environmentally sensitive attributes. The 2000 study applied the objectives of the 1995 study to achieve the comprehensive plan's goal for environmental protection (see "St. Cloud Natural Areas Inventory and Planning Framework," SEH, 1995).

#### Report Contents

This addendum to the St Cloud Natural Areas Inventory and Planning Framework (SEH, 1995) has been prepared for the City of St. Cloud in planning for the protection, conservation, or enhancement of additional important natural areas in the City and newly annexed growth corridors. It includes an electronic and paper summary of data review and field inventory; ranking and grading of natural areas in the study area (Figure 1).

The planning framework for regulatory and non-regulatory approaches to natural resource preservation and protection, and a public involvement strategy that allows for education and information distribution were developed in the 1995 study. In addition, the 1995 report includes the method and results of prioritizing the natural area

sites, the wide variety of non-regulatory approaches to natural resource preservation and protection, and the recommendation of specific planning tools to different priority categories of inventory sites.

The addendum includes final electronic inventory site mapping. Detailed manual site mapping, compilation of the electronic database of sites inventory, and digitizing and inclusion in the Geographic Information System (GIS) were performed by Short Elliott Hendrickson Inc.® (SEH).

Additional information transferred to the City of St. Cloud includes field inventory data sheets and site photographs.

## Inventory and Site Priority

The essential and most significant information contained herein is the inventory of natural resources summarized in the St. Cloud Natural Areas Database. This database is unique in making the critical link between ecological information and an environmental planning framework designed for protecting, conserving, and enhancing St Cloud’s natural resources. This section of the document describes the inventory and prioritization of sites included in the database.

### Information Review

Potential sites for inventory and ground reconnaissance were identified by analyzing maps within the study area (Figure 1) and seeking local area knowledge. Data were gathered by SEH staff in conjunction with information provided by the City of St. Cloud Planning staff. The following table lists the sources of information reviewed for the 2000 study.

**Inventory Site Determination**

<b>Information Type</b>	<b>Source</b>
High-resolution and digital ortho section maps	City of St. Cloud Planning Office
Digital wetlands imagery maps (1 inch = 2,000 ft.)	USFWS National Wetlands Inventory, 1982
Bedrock outcroppings map, field inventoried	Minnesota Geologic Survey, 1995
St. Augusta, Clearwater, Cable Quadrangle Maps	USGS 7.5 Minute Series Topographic Map, 1974
Native Plant Communities and Rare Species Maps of Sherburne and Stearns County	Minnesota County Biological Survey, Minnesota DNR, 1993 (Sherburne), 1999 (Stearns)
Regional natural resource <u>manager’s</u> knowledge	Minnesota DNR

---

Information review was undertaken to establish the sites to be considered in the inventory. Undeveloped areas observed during this review were sometimes screened out of the inventory. Sites screened out at this step were tree plantations, fallow fields, and pastures. These features function as a buffer to important natural areas.

### **Site Inventory and Mapping**

Field inventory methods were adapted from those used by the Minnesota Department of Natural Resources (MDNR) Natural Heritage Program (NHP). The natural areas were named according to “Minnesota’s Native Vegetation: A Key to Natural Communities” (MDNR, 1993), used by the NHP. Relevant pages from this key are on file with the City of St. Cloud. The data from site survey forms were then used to record ecological information in the site database (see 1995 report for survey form reference).

Additional site descriptions pertaining to buffer areas, restoration sites, and wildlife corridors are also included in Appendix A (Tables 1 and 2). Specific site data are part of the overall project deliverable to the City of St. Cloud Planning Office.

### **Natural Areas GIS Overlay**

Natural area sites identified during site inventory were delineated on digital ortho photos (prepared by SEH). Site boundaries were determined manually through ground reconnaissance and aerial photo interpretation methods. The delineated ortho photos were digitized by SEH into the GIS for the St. Cloud study area. The site numbers on the GIS map cross-reference to site information in the site database.

### **Update of Natural Areas in the St. Cloud Area**

Descriptions of natural communities identified in the study area can be found in “Minnesota’s Native Vegetation” available from the MDNR. Reported here is a synopsis of the distribution, types, and quality of natural areas in the 2000 study.

### **Distribution of Natural Areas**

The area encompassed in the 2000 study includes parts of Stearns, Sherburne, and Benton Counties. Thirty-four natural area sites, including natural area complexes, and ten buffer or restoration sites are identified in the study. There are two sites that straddle the Benton and Sherburne County Line.

In Benton County, there are eight natural area sites and two sites identified as buffer areas. In Sherburne County, there are 18 natural area sites and five sites designated as wildlife corridor, buffer, or

---

restoration area. In Stearns County, there are ten natural area sites and four restoration sites.

### **Types of Natural Areas**

Various wetland communities comprise 21 out of 34 natural areas. Most of these wetlands are wet meadow, mixed hardwood and shrub swamp, and floodplain forest, which are generally ranked “common” and “common, but with threats,” on a statewide basis (see definition of Rank in Appendix A, SEH Report, 1995). A mixed hardwood swamp in Stearns County was identified in one location and ranked locally unique.

The non-wetland communities were dominated by oak woodland. In addition to oak woodland are oak savanna (uncommon community) and mesic prairie (rare community). Oak savanna is identified twice.

Many natural area sites are grouped into a complex of one or more sites. The complexes identified are commonly a mix of upland and wetland communities near natural water bodies (e.g., creeks, rivers, and lakes). These natural areas often function to link natural drainages to larger water bodies. The classic case in this study area is the Elk River corridor, where large wetland and upland complexes are prevalent on the east side of the river. In addition, two lake communities, with associated wetlands and shore land zones, were identified as important natural complexes because of their above average rank in floral diversity, wildlife habitat, water quality and shoreline protection, and aesthetic and recreation qualities.

The wildlife corridor, buffer, and restoration sites do not meet the criteria for native plant communities. These sites were identified for protecting existing natural areas from future development and growth, as well as providing locations for ideal wetland and watershed restoration areas, and vegetated corridors connecting natural areas for wildlife travel. Examples of these communities are four headwater restoration areas identified in Stearns County that provide drainage to the Neenah Creek and Johnson Creek watersheds.

### **Quality and Stewardship of Natural Areas**

The relative quality of natural areas identified can be evaluated by examining the priority value assigned (see Appendix A, Table 2 for sites sorted by priority). Criteria for the three priority categories, as defined in the 1995 report, are applied to the sites in the 2000 study area. There are 13 high priority sites and six medium priority sites in the study area. Twenty-seven low priority sites are identified in the study area, but it is important to note that half are identified as appropriate wildlife corridors, buffers, or restoration areas.

---

The lack of buffer around natural areas was the most prevalent factor related to the reduced quality of sites for the 2000 study. Although disturbance by exotic or invasive species is recorded less frequently, exotic and invasive species are still a concern and significant factor in determining quality of sites.

Analysis of stewardship recommendations for all sites shows the need for buffers and control of exotic and invasive species. In several instances, these two factors are directly correlated where increased buffers will deter aggressive species from invading natural areas. In addition, needs for buffers are identified in cases where increased human disturbance may decrease the quality and value of sites beyond their ability to recover naturally.

Additional notes are provided as necessary in each table (Appendix A) that may identify significant components of a site's quality, value, or identity.

### **Concluding Statement**

The St. Cloud Natural Areas Inventory and Planning Framework (SEH, 1995) and 2001 Addendum have been designed in a proactive manner for addressing growth and development needs of the St. Cloud area. Compilation of the data is provided as a tool for efficient and effective haute planning that addresses environmental concerns and issues surrounding the protection of natural areas, while coordinating with development projections and growth needs.



---

## REFERENCES

City of St. Cloud Planning Office, 2000. High-Resolution and Digital Ortho Section Maps of 2000 Planning Inventory Framework Study.

Minnesota Department of Natural Resources County Biological Survey Natural Communities and Rare Species of Sherburne County, Minnesota Map, 1993. Scale: 1:90,000.

Minnesota Department of Natural Resources County Biological Survey Native Plant Communities and Rare Species of Stearns County, Minnesota Map, 1999. Scale: 1:90,000.

Minnesota Department of Natural Resources Natural Heritage Program, 1993. 'Minnesota's Native Vegetation: A Key to Natural Communities.' 111 pp.

Minnesota Geologic Survey Test Plot of Bedrock Geology with Base, Stearns County, Minnesota, 1995. Scale 1:100,000

Short, Elliot, Hendrickson Inc., 1995. 'St. Cloud Natural Areas Inventory and Planning Framework,' Prepared for the City of St. Cloud, MN.

U.S. Fish and Wildlife Service National Wetlands Inventory Digital Wetlands Imagery Maps, 1982. Scale 1" = 2,000'.

U.S. Geological Survey 7.5 Quadrangle Map, Cable, Minnesota Quadrangle, 1974. Scale: 1" = 2,000'.

U.S. Geological Survey 7.5 Quadrangle Map, Clearwater, Minnesota Quadrangle, 1974. Scale: 1" = 2,000'.

U.S. Geological Survey 7.5 Quadrangle Map, St. Augusta, Minnesota Quadrangle, 1974. Scale: 1" = 2,000'.

---

## **Appendix A**

St. Cloud Natural Areas Inventory Database - Sorted by Site (Table 1)

St. Cloud Natural Areas Inventory Database - Sorted by Priority (Table 2)

**TABLE 1**  
**ST. CLOUD NATURAL AREAS INVENTORY DATABASE - Sorted by Site**

MAP NUMBER	LOCATION						NATURAL RESOURCE EVALUATION					PLANNING FRAMEWORK			NOTES
	SITE	COUNTY	TOWN	RANGE	SECTION	QTR	QTR	ELEMENT	GRADE	COMPLEX	RANK	PRIORITY	TOOLS	STEWARDSHIP	
154	SHERBURNE	N35	30W	9		SW	NE	OAK WOODLAND	A	Y	T	H	PT1	B	
155	SHERBURNE	N35	30W	SWNW9,NESW9,NWSE9		SW	NW	RESTORATION / DISTURBED BUFFER				L	PT3	E	
156	SHERBURNE	N35	30W	SEWN15,SW15				OAK WOODLAND / SHALLOW MARSH	B	Y	T	H	PT1	B	
157	SHERBURNE	N35	30W	15		N1/2	NW	OAK WOODLAND / SAVANNA	B	Y	U	H	PT1	B,E,S	
158	SHERBURNE	N35	30W	N 1/2 15,SWNW15				SHRUB WETLAND	A	Y	T	H	PT1	B	
159	SHERBURNE	N35	30W	NENE22,NWNE15,SWNE15				WET MEADOW	C	Y	T	M	PT2	B,E	
160	SHERBURNE	N35	30W	15		SW	SE	OLD FIELD / PRAIRIE REMNANT	D	Y	C	L	PT3	B,E	
161	SHERBURNE	N35	30W	NENE22,SENE22				OAK WOODLAND	A	Y	T	H	PT1	B,S	
162	SHERBURNE	N35	30W	E 1/2 22,SWSE15				OPEN WATER MARSH / WETLAND COMPLEX	B	Y	C	H	PT1	B	
163	SHERBURNE	N35	30W	15		SE	SE	OLD FIELD				L	PT3	B	BUFFER ZONE FOR ELK RIVER COMPLEX
164	SHERBURNE	N35	30W	NESW23,NWNW23		NE	SW	OAK WOODLAND	B	Y	T	H	PT1	B,E	
165	SHERBURNE	N35	30W	23		NW	NE	OAK WOODLOT	D	N	C	L	PT3	B	
166	SHERBURNE	N35	30W	NWSW11,SWSW10,NESE10		NW	SW	OAK WOODLAND / SHALLOW MARSH COMPLEX	C	Y	T	M	PT2	B,E	
167	SHERBURNE	N35	30W	11		SE	SE	OAK WOODLAND	C	Y	T	M	PT2	B	
168	SHERBURNE	N35	30W	11		NW	SE	OAK WOODLAND	C	N	T	L	PT3	B,E	WILDLIFE CORRIDOR
169	SHERBURNE	N35	30W	11		NE	SE	WILDLIFE CORRIDOR				L	PT3	B	
170	BENTON / SHERBURNE	N35:N36	30W	2,11,14,22,23; 14,23,26,35				FLOODPLAIN FOREST COMPLEX	B	Y	T	H	PT1		ELK RIVER
171	BENTON	N36	30W	35:NWNE,SWNE,NWSE,SWSE				OAK WOODLAND BUFFER				L	PT3	B	
172	SHERBURNE	N35	30W	11		NE	NE	OAK WOODLAND / MARSH COMPLEX	D	Y	T	L	PT3	B,E	
173	BENTON	N36	30W	26		SW	NE	DISTURBED BUFFER AREA				L	PT3	B,E	
174	BENTON	N36	30W	26		SE	NE	OAK WOODLOT - BUFFER				L	PT3		BUFFER
175	BENTON	N36	30W	26		NW	NE	PALUSTRINE WETLAND COMPLEX	D	Y	C	L	PT3		BUFFER TO ELK RIVER
176	BENTON	N36	30W	26		N 1/2	NW	RIPARIAN CORRIDOR	D	N	C	L	PT3	B	MAYHEW CREEK
177	BENTON	N36	30W	NENE23,NESE23				MARSH / WET MEADOW	D	Y	C	L	PT3	B	
178	BENTON	N36	30W	W 1/2 SE33,E 1/2 SW33				SHALLOW MARSH	D	Y	C	L	PT3	B	
179	STEARNS	N123	28W	5		S 1/2	NW	SHRUB SWAMP	C	Y	T	M	PT2	B	
180	STEARNS	N123	28W	5		NE	SE	WET MEADOW	D	N	C	L	PT3	B	WILDLIFE CORRIDOR
181	STEARNS	N123	28W	5		SW	SW	RESTORATION				L	PT3	B,E,D	WET MEADOW
182	STEARNS	N123	28W	4				MIXED HARDWOOD SWAMP	A	Y	U	H	PT1	B	NEENAH CREEK
183	STEARNS	N123	29W	1, 2				LAKE COMMUNITY	B	Y	T	H	PT1		PLEASANT LAKE
184	STEARNS	N123	28W	W 1/2 6, S 1/2 1				HEADWATER WETLAND RESTORATION				L	PT3		
185	STEARNS	N123	28W	NW3,NE3				SHRUB SWAMP	D	Y	C	L	PT3	B	
186	STEARNS	N123	28W	NW3,NE3			NW	HEADWATER WETLAND RESTORATION				L	PT3		WILDLIFE CORRIDOR
187	STEARNS	N123	28W	2			SE	HEADWATER WETLAND RESTORATION				L	PT3		
188	STEARNS	N123	28W	2, 3				HEADWATER WETLAND RESTORATION				L	PT3		WILDLIFE CORRIDOR
189	STEARNS	N123	28W	SWSW2,S1/2SE3,S1/2SW3				OAK WOODLAND	C	Y	T	M	PT2	B	
190	STEARNS	N123	28W	2		SE	SW	WET MEADOW	D	Y	C	L	PT3	B	
191	STEARNS	N123	29W	1		SE	NE	MIXED HARDWOOD SWAMP / FOREST	D	Y	T	L	PT3	B,E	
192	BENTON	N36	30W	NW34,SW27,SESE28				DONOVAN LAKE COMPLEX	A	Y	T	H	PT1	B,E	
193	STEARNS	N123	28W	18		NW	NW	EMERGENT MARSH	C	Y	C	M	PT2	B,E,S	ST. AUGUSTA CREEK FLOODPLAIN
194	BENTON / SHERBURNE	N36	30W	SWNE26,SE26,E 1/2 35				WETLAND - UPLAND COMPLEX	A	Y	T	H	PT1		LARGE BUFFER TO EAST SIDE ELK RIVER
195	SHERBURNE	N35	30W	2		NE	NE	BUFFER/RESTORATION				L	PT3		EAST SIDE ELK RIVER
196	SHERBURNE	N35	30W	NENE2,SENE2				SHRUB SWAMP	B	Y	T	H	PT1		
197	SHERBURNE	N35	30W	2		SW	SE	WET MEADOW	D	Y	C	L	PT3		BUFFER TO ELK RIVER
198	SHERBURNE	N35	30W	2		NW	SE	BUFFER/RESTORATION				L	PT3		BUFFER TO ELK RIVER
199	SHERBURNE	N35	30W	NWES15, NESE15,SENE15				BUFFER				L	PT3	B	BUFFER TO ELK RIVER & TRIBUTARY

**TABLE 2**  
**ST. CLOUD NATURAL AREAS INVENTORY DATABASE - Sorted by Priority**

MAP NUMBER	LOCATION						NATURAL RESOURCE EVALUATION					PLANNING FRAMEWORK			NOTES
	SITE	COUNTY	TOWN	RANGE	SECTION	QTR	QTR	ELEMENT	GRADE	COMPLEX	RANK	PRIORITY	TOOLS	STEWARDSHIP	
154	SHERBURNE	N35	30W	9		SW	NE	OAK WOODLAND	A	Y	T	H	PT1	B	
156	SHERBURNE	N35	30W	SEWN15,SW15				OAK WOODLAND / SHALLOW MARSH	B	Y	T	H	PT1	B	
157	SHERBURNE	N35	30W	15		N1/2	NW	OAK WOODLAND / SAVANNA	B	Y	U	H	PT1	B,E,S	
158	SHERBURNE	N35	30W	N 1/2 15,SWNW15				SHRUB WETLAND	A	Y	T	H	PT1	B	
161	SHERBURNE	N35	30W	NENE22,SENE22				OAK WOODLAND	A	Y	T	H	PT1	B,S	
162	SHERBURNE	N35	30W	E 1/2 22,SWSE15				OPEN WATER MARSH / WETLAND COMPLEX	B	Y	C	H	PT1	B	
164	SHERBURNE	N35	30W	NESW23,NWNW23		NE	SW	OAK WOODLAND	B	Y	T	H	PT1	B,E	
170	BENTON / SHERBURNE	N35:N36	30W	2,11,14,22,23: 14,23,26,35				FLOODPLAIN FOREST COMPLEX	B	Y	T	H	PT1		ELK RIVER
182	STEARNS	N123	28W	4				MIXED HARDWOOD SWAMP	A	Y	U	H	PT1	B	NEENAH CREEK
183	STEARNS	N123	29W	1, 2				LAKE COMMUNITY	B	Y	T	H	PT1		PLEASANT LAKE
192	BENTON	N36	30W	NW34,SW27,SESE28				DONOVAN LAKE COMPLEX	A	Y	T	H	PT1	B,E	
194	BENTON / SHERBURNE	N36	30W	SWNE26,SE26,E 1/2 35				WETLAND - UPLAND COMPLEX	A	Y	T	H	PT1		LARGE BUFFER TO EAST SIDE ELK RIVER
196	SHERBURNE	N35	30W	NENE2,SENE2				SHRUB SWAMP	B	Y	T	H	PT1		
159	SHERBURNE	N35	30W	NENE22,NWNE15,SWNE15				WET MEADOW	C	Y	T	M	PT2	B,E	
166	SHERBURNE	N35	30W	NWSW11,SWSW10,NESE10		NW	SW	OAK WOODLAND / SHALLOW MARSH COMPLEX	C	Y	T	M	PT2	B,E	
167	SHERBURNE	N35	30W	11		SE	SE	OAK WOODLAND	C	Y	T	M	PT2	B	
179	STEARNS	N123	28W	5		S 1/2	NW	SHRUB SWAMP	C	Y	T	M	PT2	B	
189	STEARNS	N123	28W	SWSW2,S1/2SE3,S1/2SW3				OAK WOODLAND	C	Y	T	M	PT2	B	
193	STEARNS	N123	28W	18		NW	NW	EMERGENT MARSH	C	Y	C	M	PT2	B,E,S	ST. AUGUSTA CREEK FLOODPLAIN
155	SHERBURNE	N35	30W	SWNW9,NESW9,NWSE9		SW	NW	RESTORATION / DISTURBED BUFFER				L	PT3	E	
160	SHERBURNE	N35	30W	15		SW	SE	OLD FIELD / PRAIRIE REMNANT	D	Y	C	L	PT3	B,E	
163	SHERBURNE	N35	30W	15		SE	SE	OLD FIELD				L	PT3	B	BUFFER ZONE FOR ELK RIVER COMPLEX
165	SHERBURNE	N35	30W	23		NW	NE	OAK WOODLOT	D	N	C	L	PT3	B	
168	SHERBURNE	N35	30W	11		NW	SE	OAK WOODLAND	C	N	T	L	PT3	B,E	WILDLIFE CORRIDOR
169	SHERBURNE	N35	30W	11		NE	SE	WILDLIFE CORRIDOR				L	PT3	B	
171	BENTON	N36	30W	35:NWNE,SWNE,NWSE,SWSE				OAK WOODLAND BUFFER				L	PT3	B	
172	SHERBURNE	N35	30W	11		NE	NE	OAK WOODLAND / MARSH COMPLEX	D	Y	T	L	PT3	B,E	
173	BENTON	N36	30W	26		SW	NE	DISTURBED BUFFER AREA				L	PT3	B,E	
174	BENTON	N36	30W	26		SE	NE	OAK WOODLOT - BUFFER				L	PT3		BUFFER
175	BENTON	N36	30W	26		NW	NE	PALUSTRINE WETLAND COMPLEX	D	Y	C	L	PT3		BUFFER TO ELK RIVER
176	BENTON	N36	30W	26		N 1/2	NW	RIPARIAN CORRIDOR	D	N	C	L	PT3	B	MAYHEW CREEK
177	BENTON	N36	30W	NENE23,NESE23				MARSH / WET MEADOW	D	Y	C	L	PT3	B	
178	BENTON	N36	30W	W 1/2 SE33,E 1/2 SW33				SHALLOW MARSH	D	Y	C	L	PT3	B	
180	STEARNS	N123	28W	5		NE	SE	WET MEADOW	D	N	C	L	PT3	B	WILDLIFE CORRIDOR
181	STEARNS	N123	28W	5		SW	SW	RESTORATION				L	PT3	B,E,D	WET MEADOW
184	STEARNS	N123	28W	W 1/2 6, S 1/2 1				HEADWATER WETLAND RESTORATION				L	PT3		
185	STEARNS	N123	28W	NW3,NE3				SHRUB SWAMP	D	Y	C	L	PT3	B	
186	STEARNS	N123	28W	NW3,NE3			NW	HEADWATER WETLAND RESTORATION				L	PT3		WILDLIFE CORRIDOR
187	STEARNS	N123	28W	2			SE	HEADWATER WETLAND RESTORATION				L	PT3		
188	STEARNS	N123	28W	2, 3				HEADWATER WETLAND RESTORATION				L	PT3		WILDLIFE CORRIDOR
190	STEARNS	N123	28W	2		SE	SW	WET MEADOW	D	Y	C	L	PT3	B	
191	STEARNS	N123	29W	1		SE	NE	MIXED HARDWOOD SWAMP / FOREST	D	Y	T	L	PT3	B,E	
195	SHERBURNE	N35	30W	2		NE	NE	BUFFER/RESTORATION				L	PT3		EAST SIDE ELK RIVER
197	SHERBURNE	N35	30W	2		SW	SE	WET MEADOW	D	Y	C	L	PT3		BUFFER TO ELK RIVER
198	SHERBURNE	N35	30W	2		NW	SE	BUFFER/RESTORATION				L	PT3		BUFFER TO ELK RIVER
199	SHERBURNE	N35	30W	NWES15, NESE15, SENE15				BUFFER				L	PT3	B	BUFFER TO ELK RIVER & TRIBUTARY

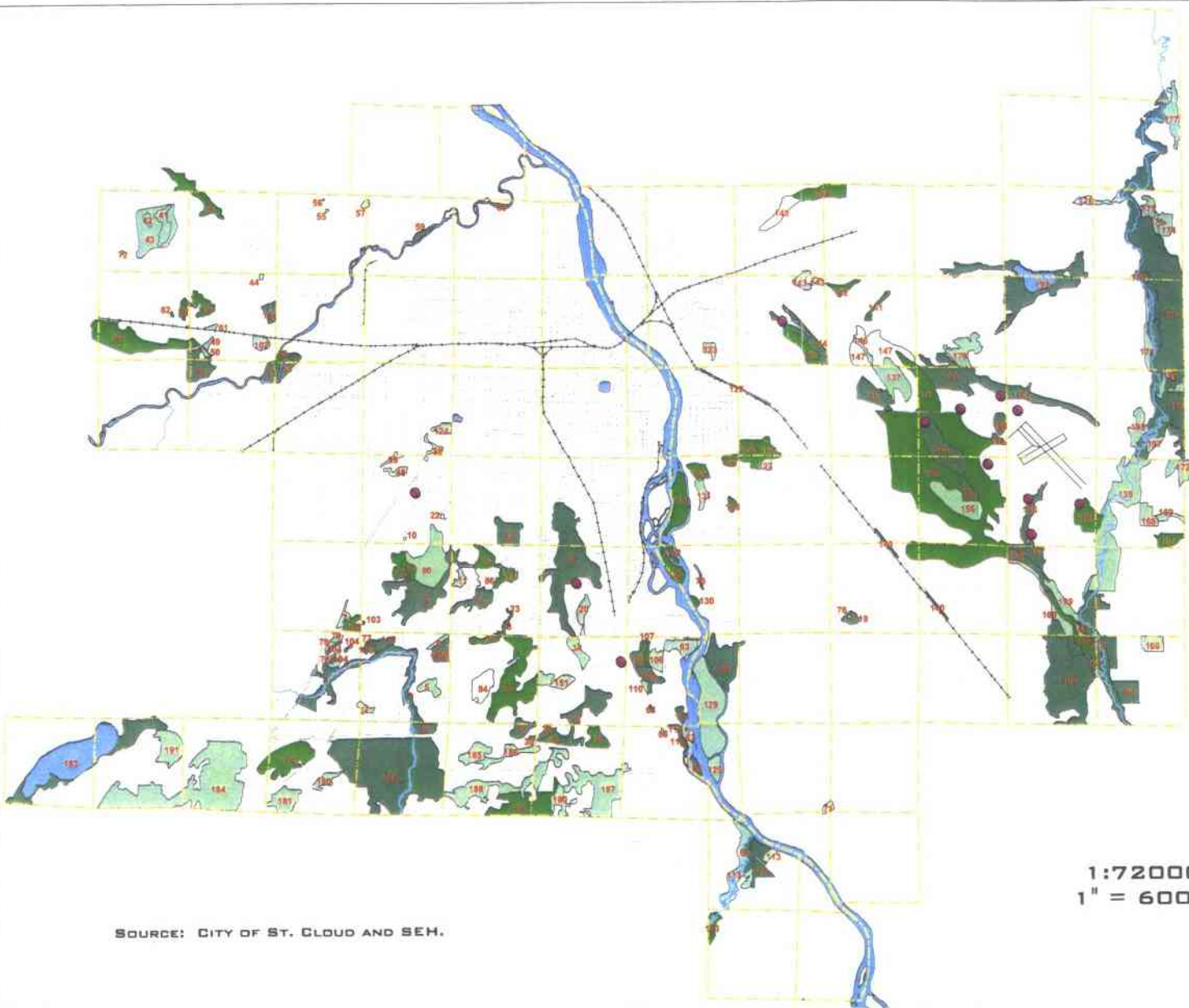
---

## **List of Figures**

Figure 1 – St. Cloud, MN Natural Areas

Figure 2 – St. Cloud, MN Natural Areas – 2000 Study

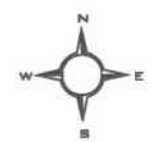
# ST. CLOUD, MN NATURAL AREAS



- LEGEND**
- Natural Area Priority
    - High
    - Medium
    - Low
    - Not Prioritized
  - Rare Species
  - Sections
  - Roads
  - Railroads
  - Airport
  - Other Major Rivers
  - Major Lakes & River Bodies

**FIGURE 1**

1:72000  
1" = 6000'



SOURCE: CITY OF ST. CLOUD AND SEH.

# ST. CLOUD, MN NATURAL AREAS

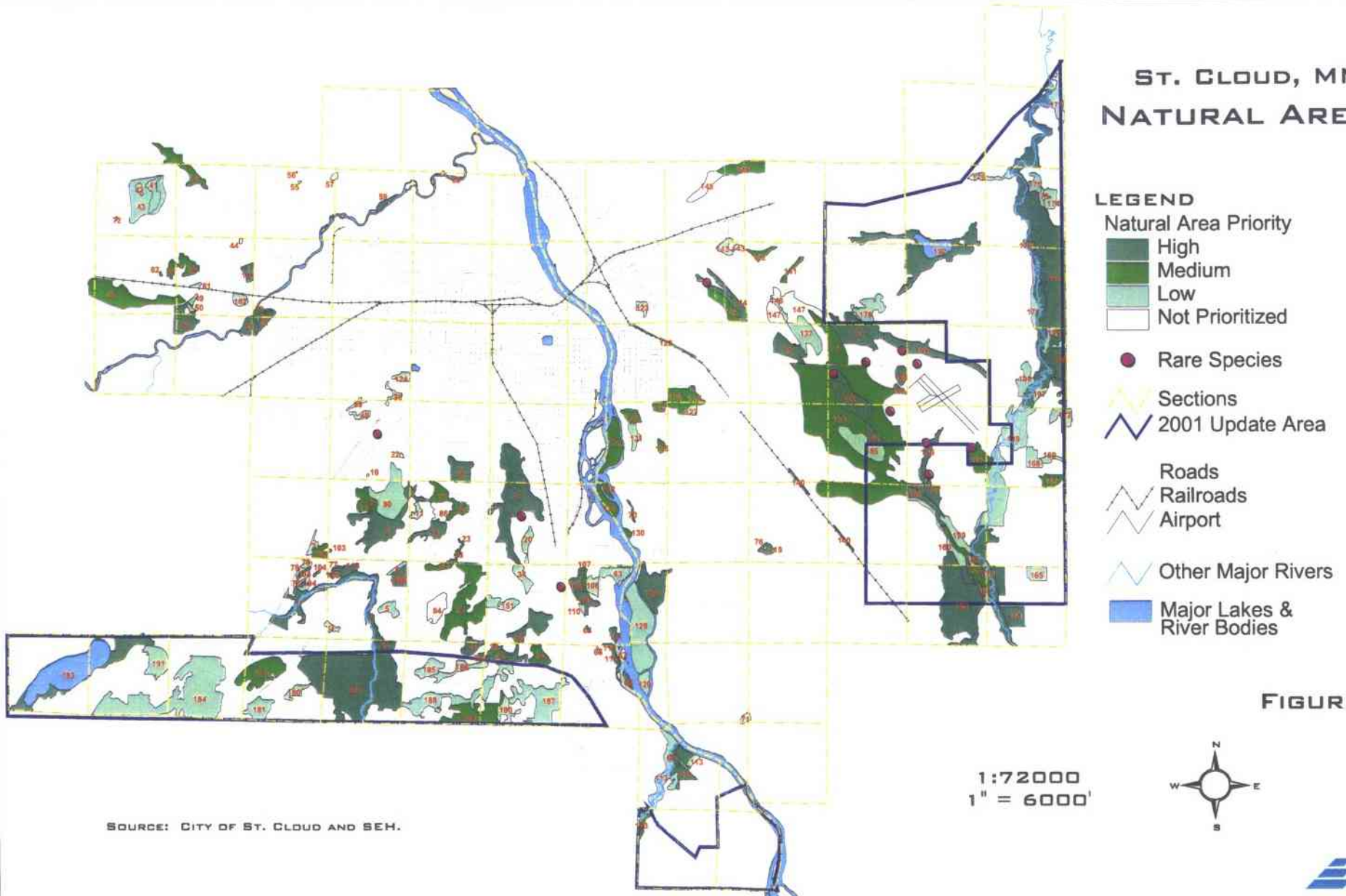


FIGURE 2

1:72000  
1" = 6000'



SOURCE: CITY OF ST. CLOUD AND SEH.