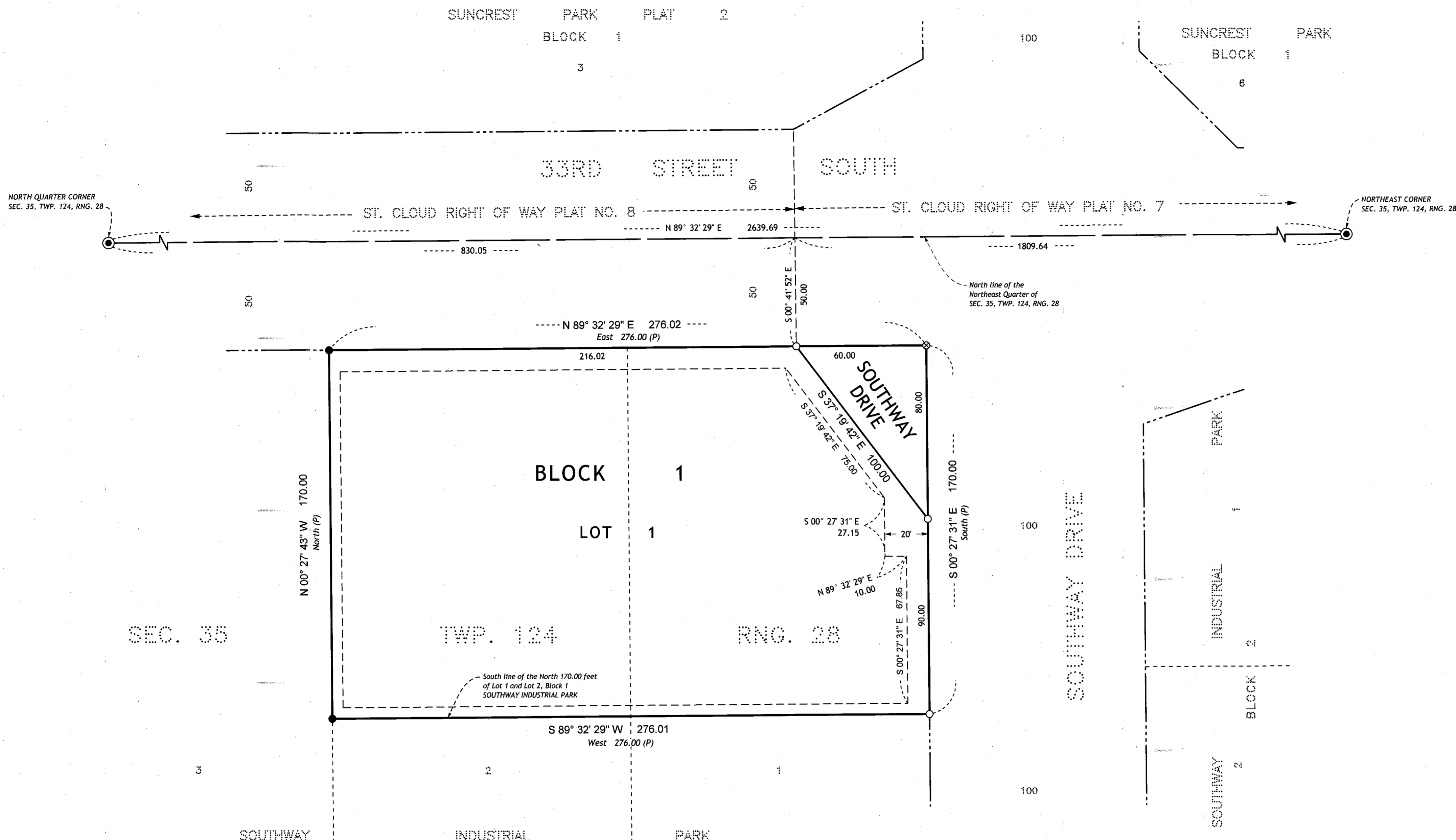


SOUTHWAY INDUSTRIAL PARK PLAT 3



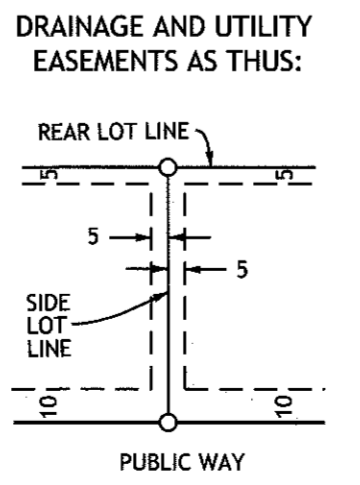
PLAT AREAS +/-
 ENTIRE PLAT = 1.08 AC.
 BLOCK 1 -
 LOT 1 = 1.02 AC.
 ROAD R/W = 0.06 AC.

SEC. 35 TWP. 124 RNG. 28

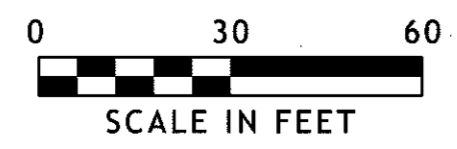


ORIENTATION OF THIS BEARING SYSTEM ASSUMES THE NORTH LINE OF THE NORTHEAST QUARTER OF SEC. 35, TWP. 124, RNG. 28 BEARS NORTH 89° 32' 29" EAST

- LEGEND OF PROPERTY BOUNDARY SYMBOLS**
- SET IRON PIPE WITH CAP STAMPED "DELO 40341"
 - FOUND IRON MONUMENT
 - ⊙ GOVERNMENT SECTION CORNER MONUMENT
 - ⊙ SET MAGNETIC "PK" NAIL
 - (P) DIMENSION PER UNDERLYING PLAT OF RECORD



Being 5 feet in width and adjoining side and rear lot lines and being 10 feet in width and adjoining public ways, unless otherwise indicated on this plat.



SURVEYOR'S CERTIFICATION

I Samuel J. DeLeo do hereby certify that this plat was prepared by me or under my direct supervision; that I am a duly Licensed Land Surveyor in the State of Minnesota; that this plat is a correct representation of the boundary survey; that all mathematical data and labels are correctly designated on this plat; that all monuments depicted on this plat have been, or will be correctly set within one year; that all water boundaries and wet lands, as defined in Minnesota Statutes, Section 505.01, Subd. 3, as of the date of this certificate are shown and labeled on this plat; and all public ways are shown and labeled on this plat.

Dated this 23rd day of October, 2018.

Samuel J. DeLeo
 Samuel J. DeLeo, Licensed Land Surveyor
 Minnesota License Number 40341

STATE OF MINNESOTA
 COUNTY OF STEARNS

The foregoing Surveyor's Certification was acknowledged before me this 23rd day of October, 2018 by Samuel J. DeLeo, Licensed Land Surveyor, Minnesota License Number 40341.

Sidney Theis
 Sidney Theis

Notary Public Stearns County, Minnesota
 My commission expires January 31, 2022

KNOW ALL PERSONS BY THESE PRESENTS: That the City of St. Cloud, a municipal corporation, owners and proprietors of the of the following described property situated in the City of St. Cloud, County of Stearns, State of Minnesota to-wit:

The northerly 170 feet of Lot One (1) and the northerly 170 feet of Lot Two (2), Blk 1, of Southway Industrial Park, according to the plat and survey thereof now on file and of record in the office of the Register of Deeds, in and for the County of Stearns, Minnesota.

Have caused the same to be surveyed and platted as SOUTHWAY INDUSTRIAL PARK PLAT 3 and do hereby dedicate to the public for public use forever the public way and the drainage and utility easements only, as created by this plat.

In witness whereof said City of St. Cloud, a municipal corporation, owners and proprietors, has caused these presents to be signed by its proper officers this 17th day of November, 2018.

David Kleis, Mayor
Seth Kauffman, City Clerk

STATE OF MINNESOTA
 COUNTY OF STEARNS

The foregoing instrument was acknowledged before me this 13th day of November, 2018, by David Kleis, Mayor of the City of St. Cloud, on behalf of the City of St. Cloud, a municipal corporation.

Janice D. Koetter (Notary Signature)
Janice D. Koetter (Notary Printed Name)

Notary Public, Stearns County, Minnesota
 My commission expires Jan. 31, 2020

STATE OF MINNESOTA
 COUNTY OF STEARNS

The foregoing instrument was acknowledged before me this 13th day of November, 2018, by Seth Kauffman, City Clerk of the City of St. Cloud, on behalf of the City of St. Cloud, a municipal corporation.

Janice D. Koetter (Notary Signature)
Janice D. Koetter (Notary Printed Name)

Notary Public, Stearns County, Minnesota
 My commission expires Jan. 31, 2020

CITY OF ST. CLOUD

Pursuant to Article 5, Section 5.8 of the St. Cloud Land Development code, this administrative plat has been approved by the Planning Director of the City of St. Cloud this 9th day of November, 2018.

Matt Glaesman, Planning Director, Matt Glaesman
Seth Kauffman, Attest: Clerk, Seth Kauffman

STEARNS COUNTY

I hereby certify that this plat has been examined and recommended for approval this 20th day of November, 2018.

Matthew J. Jensen
 Stearns County Surveyor,
 Minnesota License Number 49982

Pursuant to Minnesota Statutes, Section 505.021, Subd. 9, taxes payable in the year 2018 on the land hereinbefore described have been paid. Also, pursuant to Minnesota Statutes, Section 272.12, there are no delinquent taxes and transfer entered this 20th day of November, 2018.

Randy Schriebers, Stearns County Auditor / Treasurer
Brenda Stanger, Deputy Auditor / Treasurer

Tax Parcel Number: 82.50780.0002

I hereby certify that this instrument was filed for record in the Office of the County Recorder in and for Stearns County, Minnesota on this 20th day of November, 2018, at 3:41 o'clock P.M. as Document No. 15931257 in Plat Cabinet L No. 188.

Diane Grundhoefer, Stearns County Recorder
Debbie Kahlert, Deputy Recorder

