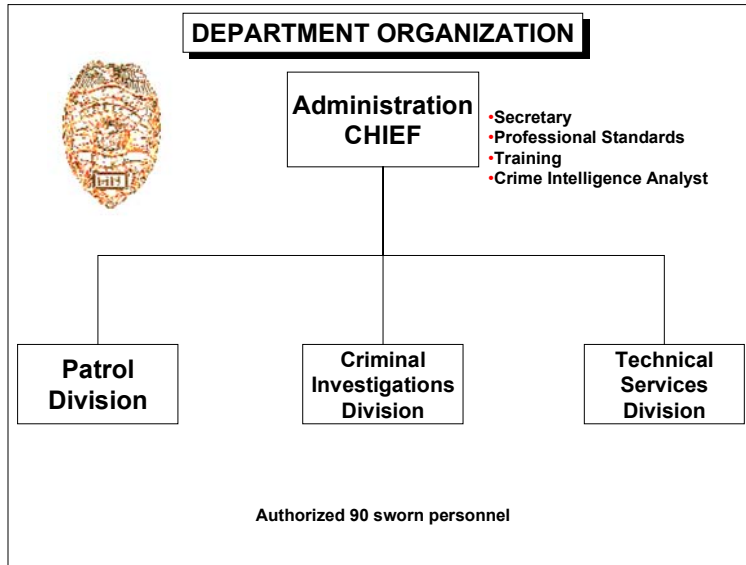


TABLE OF CONTENTS

ORGANIZATION.....	2
BUDGET.....	4
CALLS FOR SERVICE AND CRIME DATA.....	5
Calls for Service	5
Crimes	6
Part I Offenses	6
Part II Offenses	8
ACCIDENTS AND TRAFFIC ENFORCEMENT.....	11
Personal Injury Accidents	11
Citations and Warnings	12

ORGANIZATION

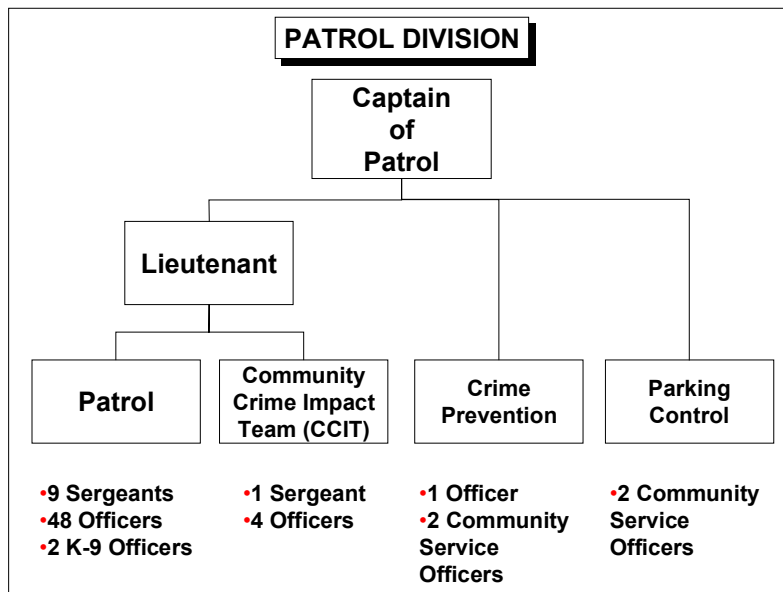
The following charts depict the organization of the St. Cloud Police Department during 2000:



The Chief is responsible for the administration and operations of the Police Department. The Chief is assisted by 90 sworn police officers and 22 support personnel.

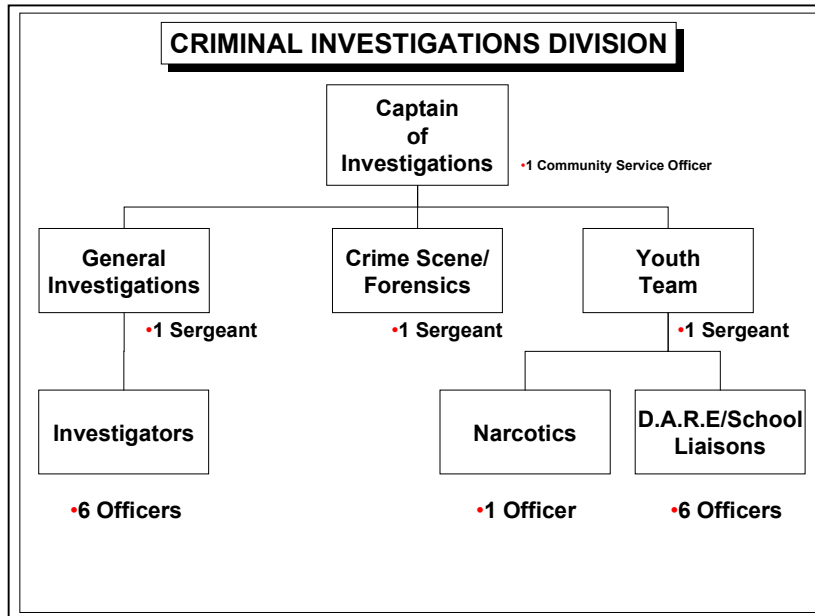
THE PATROL DIVISION

The Patrol Division is the largest division in the department. The division is responsible for citywide patrol, initial response to all calls for service, and initial investigations. Additionally, the Patrol Division includes the Community Crime Impact Team, K9, Bike Patrol, Special Emergency Response Team (SERT), Chaplain, and Reserve Program.



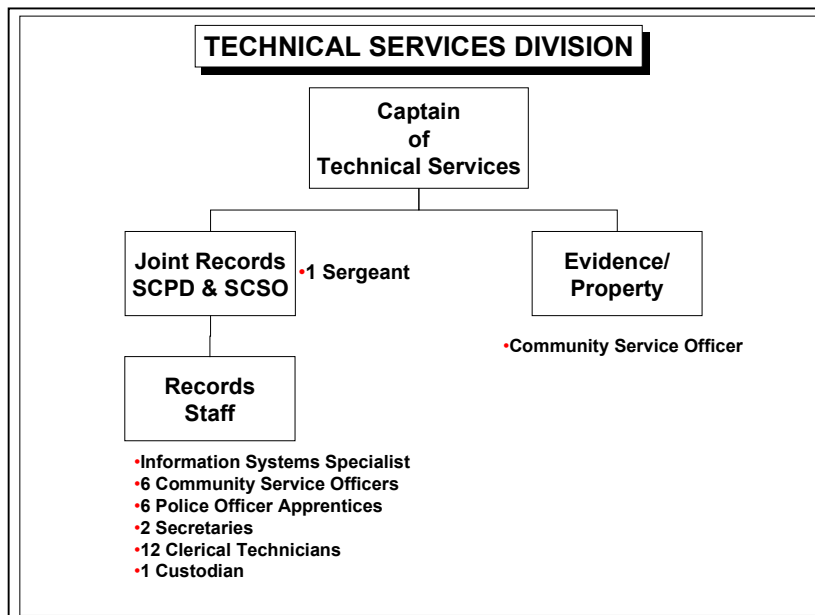
CRIMINAL INVESTIGATIONS DIVISION

The Criminal Investigations Division supports the Patrol Division. The Criminal Investigations Division continues the investigation of major felonies that due to geography, expertise, or investigation duration are beyond the resources available to the Patrol Division. Investigations include: crime scene and forensic examinations, child and adult interviews, covert operations, case preparation, youth investigations, and D.A.R.E. for all elementary schools.

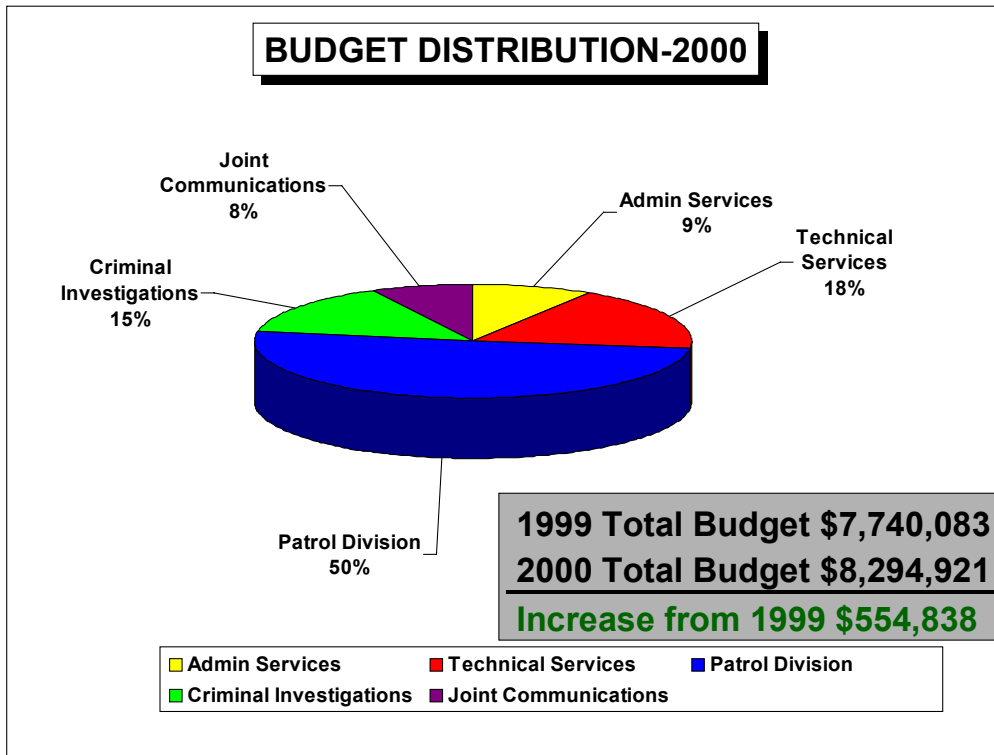


TECHNICAL SERVICES DIVISION

The Technical Services division is responsible for administrative and technical support for all divisions within the department.



The St. Cloud Police Department's budget for fiscal year 2000 was \$8,294,921. This is a 7.2% budget increase from 1999. The budget was distributed to the areas depicted below:

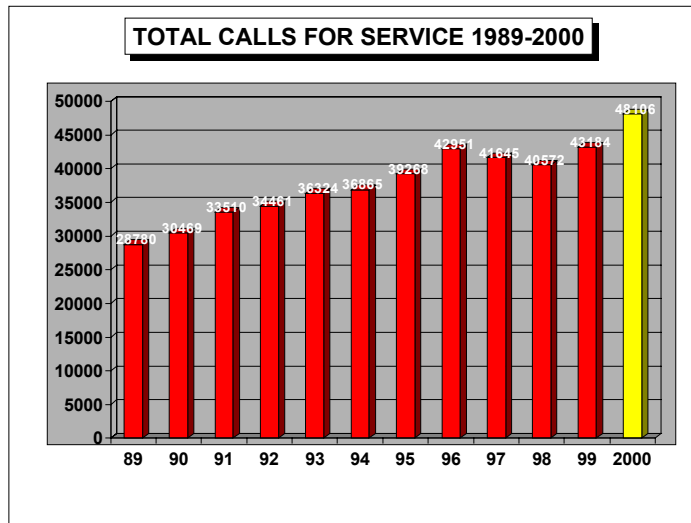


The City of St. Cloud pays one half of the cost for the emergency communications system managed by the Stearns County Sheriff's Office.

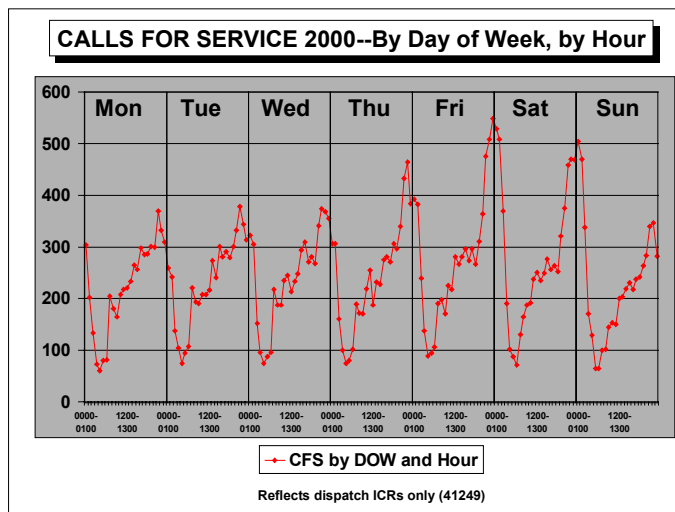
CALLS FOR SERVICE AND CRIME DATA

Calls for Service—

Calls for Service are the raw calls made by the public for police services. They are the prime indicators of the department’s workload. During 2000 the department received 48,106 calls for police services. The 2000 call load was the heaviest to date.

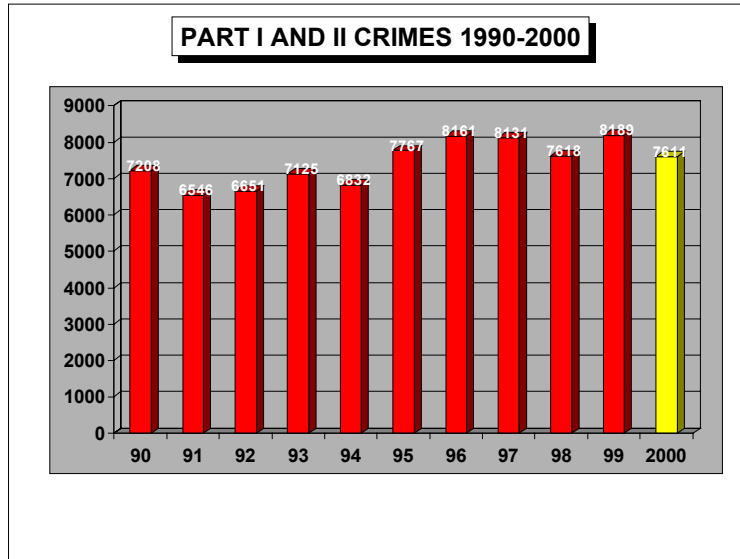


Calls for Service are not uniformly distributed throughout the day. The following line graph illustrates the total Calls for Service received at the Communications Center (represent 41,249 calls) by time of day and day of week throughout 2000



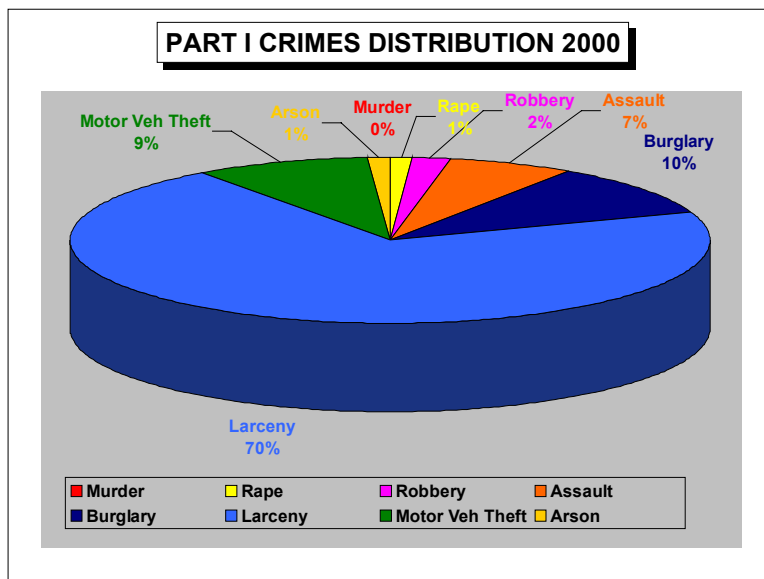
Crimes—

Overall, reportable crime has remained quite stable since 1990. St. Cloud is considered one of the safest cities in the U. S. The following graph shows the number of reportable offenses (Uniform Crime Reports Part I and Part II offenses) in St. Cloud over the last eleven years. In 2000, there were 7,611 reportable offenses.

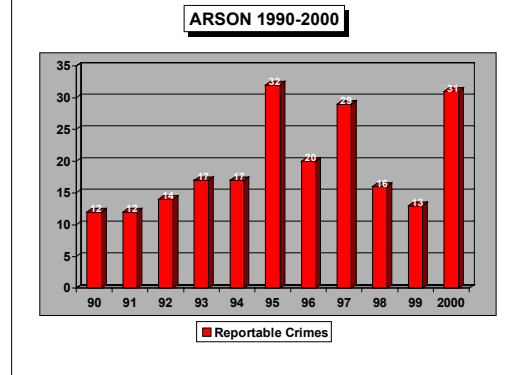
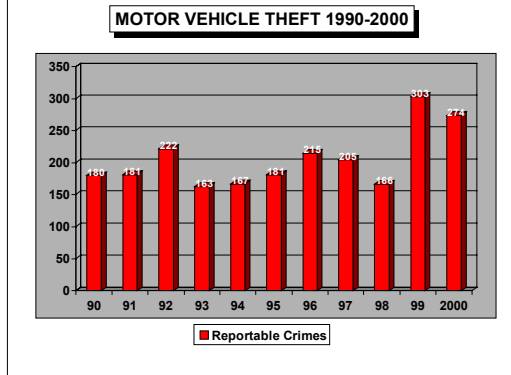
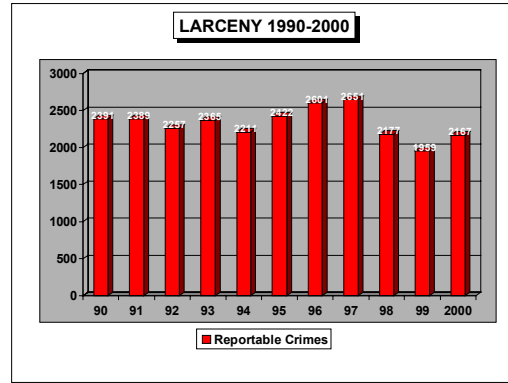
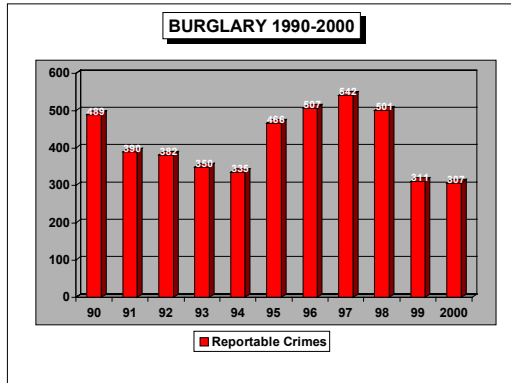
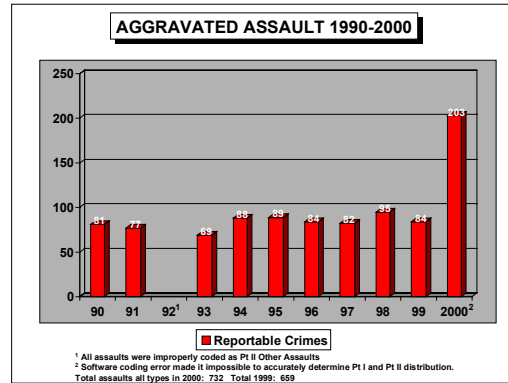
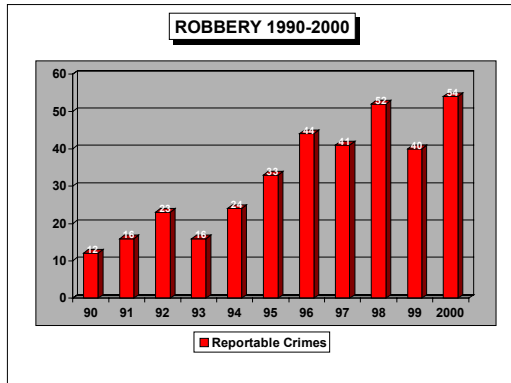
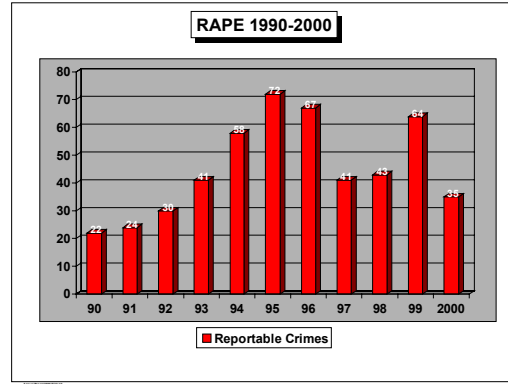
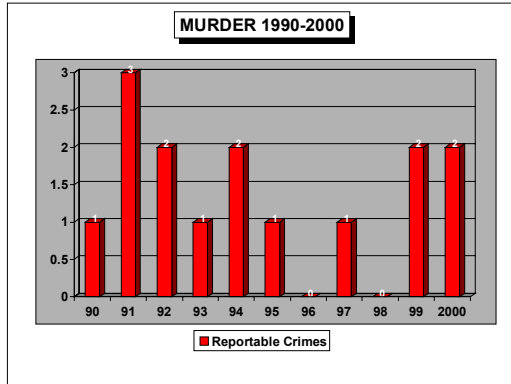


Part I Offenses—

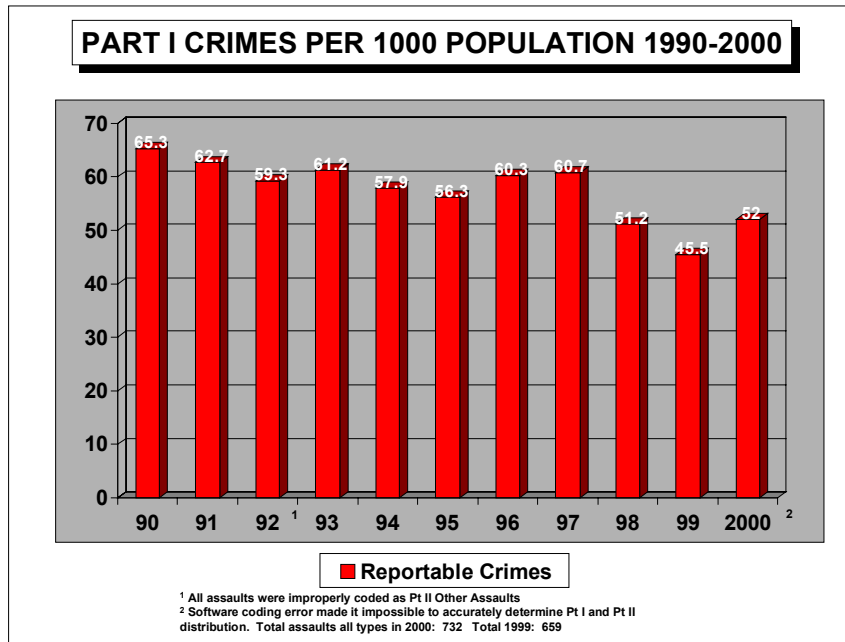
Of all the reportable offenses the most serious are tracked as Part I offenses. Part I offenses, as defined by the Federal Bureau of Investigation, are: Murder, Rape, Robbery, Assault, Burglary, Larceny, Motor Vehicle Theft and Arson. In 2000 there were 3,073 Part I offenses committed in St. Cloud distributed as shown below:



The following graphs depict Part I crime trends since 1990 in each crime category:
 (Note: A software coding error caused some Pt II assaults to be miscoded as Pt I assaults. Total assaults all types in 2000: 732 Total 1999: 659)



The following chart illustrates Part I Crimes adjusted per 1000 population:



The St. Cloud Planning Office provided the population statistics used in the previous chart. The population statistics used were:

1990	1991	1992	1993	1994	1995	1996	1997	1998	1999	2000
48812	49350	49434	49416	50143	58566	58646	59202	59584	61037	59107

Part II Offenses--

Part II offenses are offenses of a less serious nature than Part I offenses. The following is a list of all crimes that fall under Part II of the Uniform Crime Reports: Other Assaults; Forgery and Counterfeiting; Fraud; Embezzlement; Stolen Property, Buying, Receiving, Possessing; Vandalism; Weapons, Carrying Possessing, etc; Prostitution and Commercialized Vice; Sex Offenses; Drug Abuse Violations; Gambling; Offenses Against the Family and Children; Driving Under the Influence; Liquor Laws; Drunkenness; Disorderly Conduct; Vagrancy; All Other Offenses.

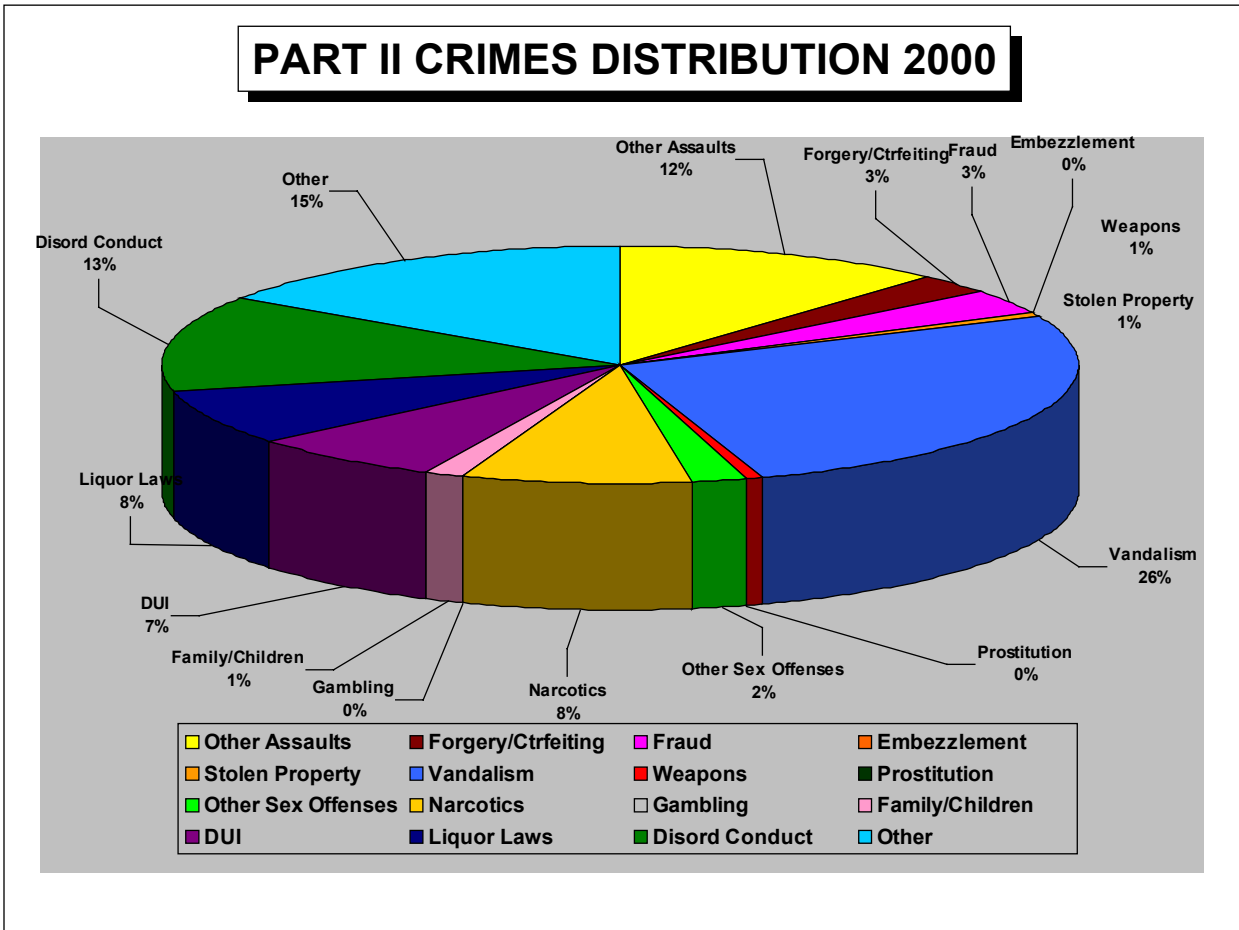
Three categories of Part II offenses bear further explanation.

Weapons violations deal with violations such as carrying, displaying, or manufacturing a deadly weapon and do not include all offenses where a weapon was used. If a weapon was used in committing a higher level offense, that offense is counted under the higher level crime. Using a weapon in a robbery or murder will result in the offense being classified as a robbery or murder, not a weapons violation.

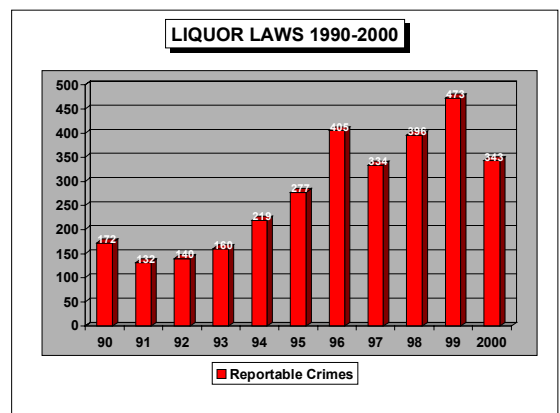
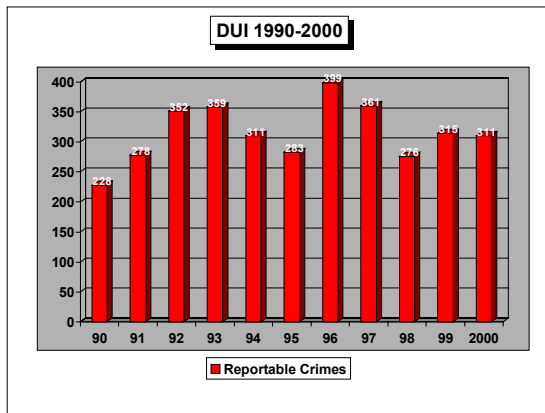
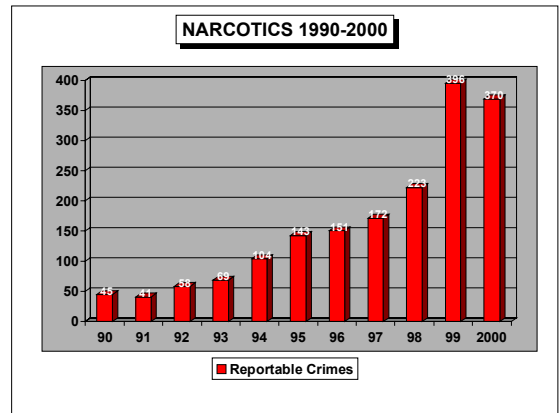
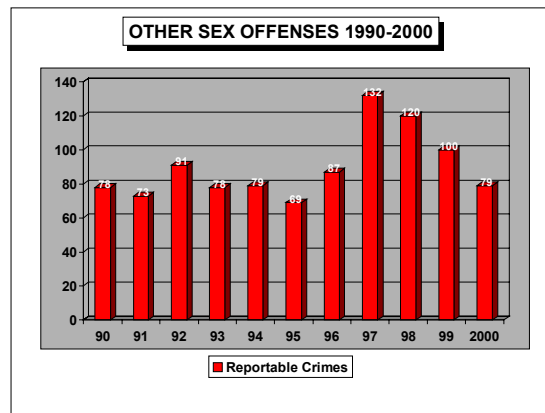
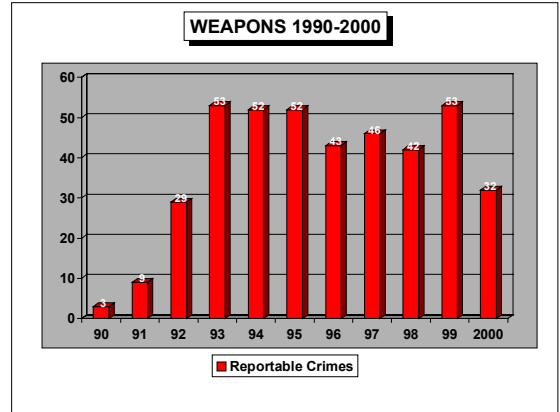
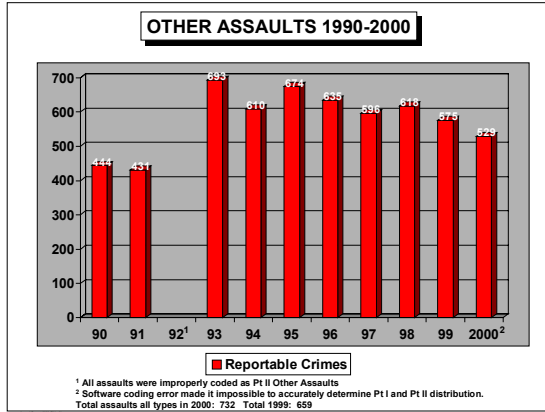
Sex offenses cover sex-related crimes other than forcible rape (Criminal Sexual Conduct 1). They include such things as incest, indecent exposure, sodomy, statutory rape (no force), etc.

Offenses against the family and children include nonsupport, neglect, or abuse of family and children. Examples are desertion, abandonment, nonsupport of spouse or child, neglect, or nonpayment of alimony

In 2000 4,538 Part II offenses were committed in St. Cloud. The following chart depicts the 2000 Part II offenses distribution:



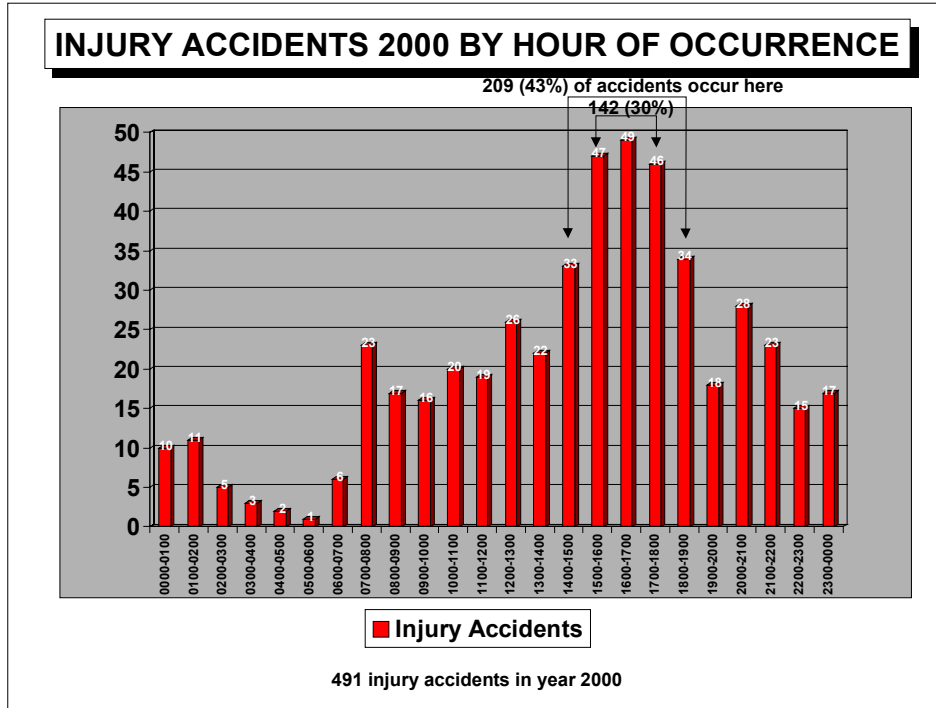
The following graphs depict Part II crime trends for crimes committed in each year from 1990 in selected crime categories:



ACCIDENTS AND TRAFFIC ENFORCEMENT

Personal Injury Accidents--

In 2000 there were 491 personal injury accidents in St. Cloud. About 30% of these accidents occur in the three-hour period from 3 p.m. to 6 p.m. The following graph shows the distribution of accidents by hour of occurrence and indicates an increase in personal injury accidents in the afternoon time period:



Citations and Warnings--

The St. Cloud community considers traffic enforcement a high priority. In 2000 the St. Cloud Police Department has translated that into citations and warnings for over 10,000 offenses. The next page details citation and warning distribution and distribution by offense cited.