



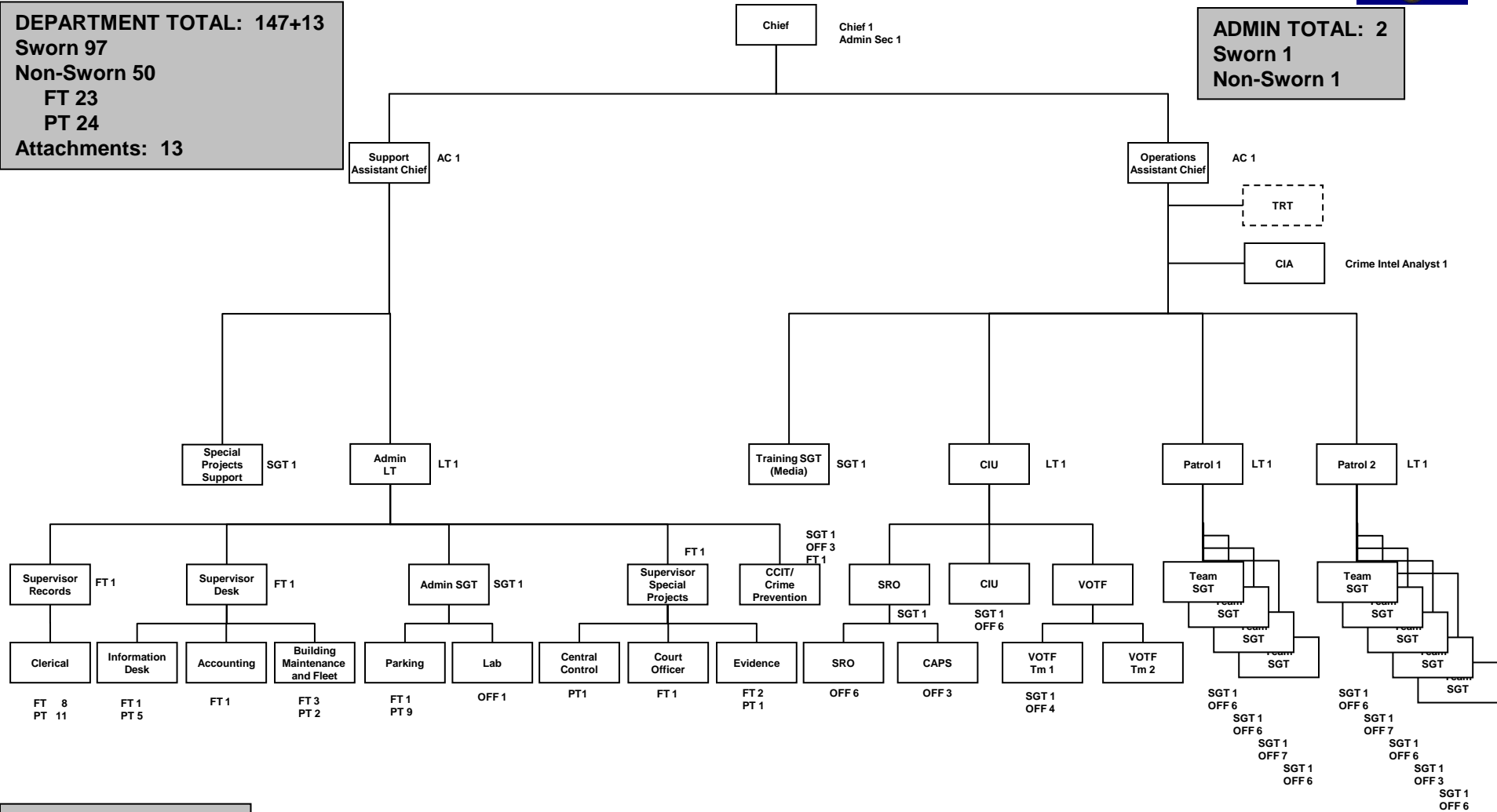
SCPD DEPARTMENT ORGANIZATION



As of 26 Nov 2013

DEPARTMENT TOTAL: 147+13
Sworn 97
Non-Sworn 50
 FT 23
 PT 24
Attachments: 13

ADMIN TOTAL: 2
Sworn 1
Non-Sworn 1



SUPPORT TOTAL: 57
Sworn 9
Non-Sworn 48
 FT 21
 PT 27
Attachments: 0

OPERATIONS TOTAL: 88+13
Sworn 87
Non-Sworn 1
Attachments: 13



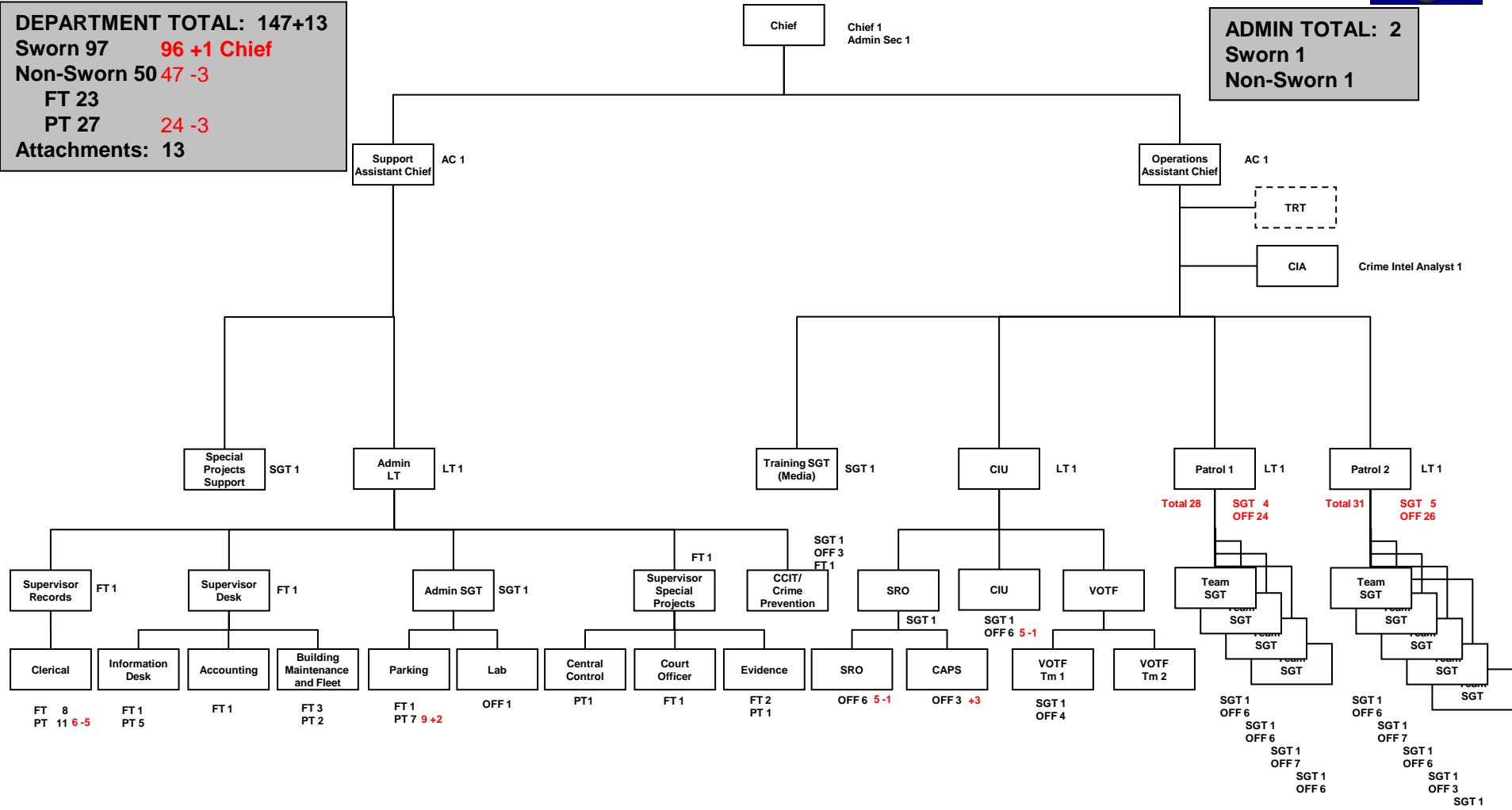
SCPD DEPARTMENT ORGANIZATION



As of 26 Nov 2013 (Status changes noted in RED)

DEPARTMENT TOTAL: 147+13
 Sworn 97 **96 +1 Chief**
 Non-Sworn 50 **47 -3**
 FT 23
 PT 27 **24 -3**
 Attachments: 13

ADMIN TOTAL: 2
 Sworn 1
 Non-Sworn 1



SUPPORT TOTAL: 57 **54 -3**
 Sworn 9
 Non-Sworn 48
 FT 21
 PT 27 **24 -3**
 Attachments: 0

OPERATIONS TOTAL: 88+13
 Sworn 87 **86 -1**
 Non-Sworn 1
 Attachments: 13