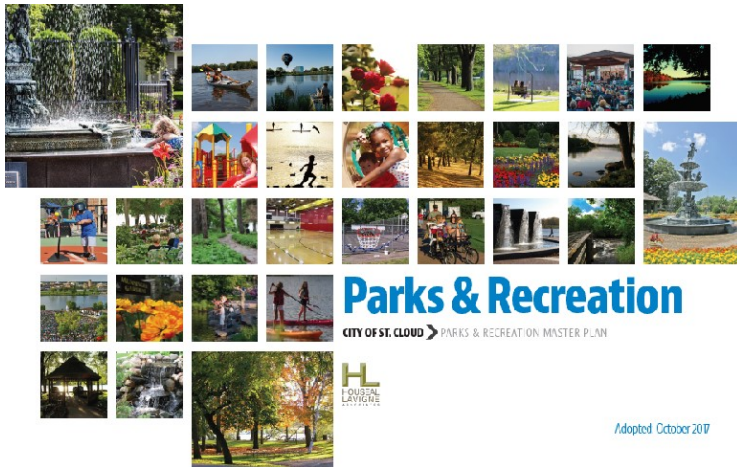




PARK & RECREATION DEPARTMENT 2017 ANNUAL REPORT



Adopted October 2017

DIVISIONS

**Administration
Forestry**

Park Maintenance

**Gardens
Recreation**

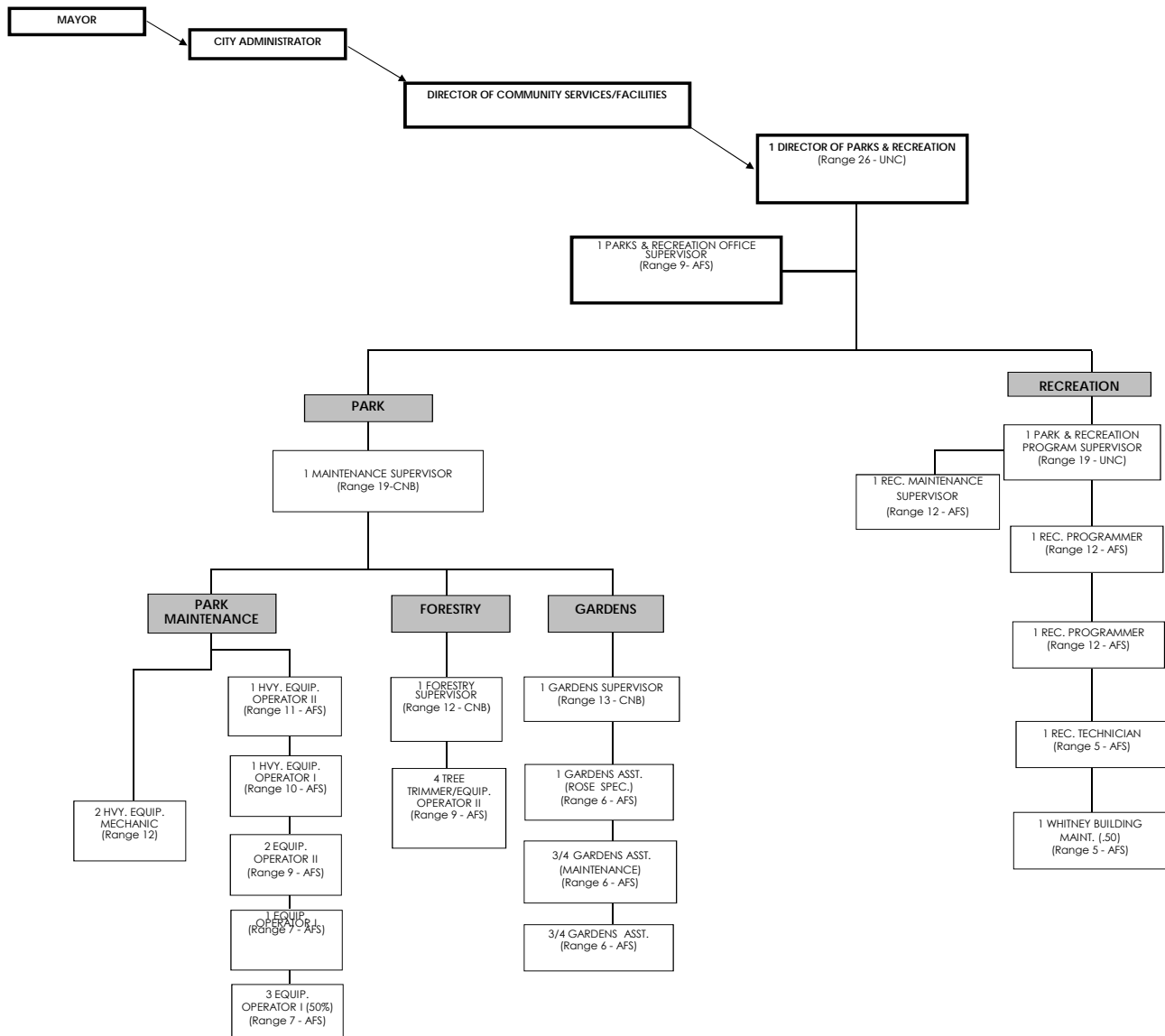
MISSION STATEMENT

It is the mission of the Park & Recreation Department to plan, develop, maintain, preserve and provide quality programs, services and facilities to meet the needs of residents for a safe and clean park environment within resources available.

VISION

In five years, St. Cloud's Park & Recreation Department will be recognized by residents and visitors as a high quality organization that helps ensure world-class opportunities for parks, open space and recreational pursuits.

Park and Recreation Organizational Chart 2017



PARK & RECREATION DEPARTMENT ***CONTACT INFORMATION***

PARK & RECREATION OFFICE

1101 7th Street South
St. Cloud MN 56301
Phone: (320) 257-5959
Fax (320) 257-0657
Website: www.ci.stcloud.mn.us/91/Park-Recreation

PARK MAINTENANCE OFFICE

1506 Third Avenue South
St. Cloud, MN 56301
Phone: (320) 257-5966
Fax: (320) 529-6552

MUNSINGER/CLEMENS GARDENS OFFICE

1563 Riverside Drive S.E.
St. Cloud, MN 56304
Phone: (320) 650-3128

GARDENS GIFT SHOP

1399 Kilian Boulevard S.E.
St. Cloud, MN 56304
Sub-Contractor: Village Pharmacy & Gift
Phone: (320) 258-0381

WHITNEY RECREATION CENTER GYM OFFICE

1529 Northway Drive
St. Cloud, MN 56303
Phone: (320) 255-7277
FAX: (320) 255-7282

PARK AND RECREATION STAFF

ADMINISTRATION

Scott Zlotnik	Park and Recreation Director
VACANT (not funded)	Assistant Park Director
Jessica Schaefer	Office Supervisor

FORESTRY

VACANT (not funded)	Forestry Supervisor
Aaron Keppers	Tree Trimmer
VACANT (not funded)	(3) Tree Trimmer Positions

GARDENS

Nia Primus	Gardens Supervisor
Debra Keiser	Gardens Assistant - Rose Specialist
Kurt Binnie	75% Gardens Assistant - Maintenance
VACANT (not funded)	75% Gardens Assistant

MAINTENANCE

Chris Zabinski	Park Maintenance Supervisor
Gary Evens	Heavy Equipment Mechanic
Robert Luebesmier	Heavy Equipment Mechanic
Steve Blommer	Heavy Equipment Operator II
Allan Kersting	Heavy Equipment Operator I
Troy Johnson	Equipment Operator II
Russell Linn	Equipment Operator II
Arlan Rausch	Equipment Operator I
Hayden Lane	Equipment Operator I, 50% (Shared Position)
Leon Motl	Equipment Operator I, 50% (Shared Position)
James Warzecha	Equipment Operator I, 50% (Shared Position)
VACANT (not funded)	Equipment Operator I
VACANT (not funded)	Laborer

RECREATION

Vacant (not funded)	Recreation Director
Marci Sussenguth	Park and Recreation Program Supervisor
Steve Krueger	Recreation Programmer
Lynn Neumann	Recreation Programmer
Gregory Simon	Whitney Operations Assistant
David Kroll	Building Maintenance Supervisor
Alan Smith	Building Maintenance Worker, 50% (Shared Position)
VACANT (not funded)	Clerical Technician
VACANT (not funded)	Custodian

PARK & RECREATION ADVISORY BOARD

Section 235:00 of City Code created and established an advisory board known as the Park & Recreation Advisory Board. The Mayor appoints members of the advisory board for a term of three years, without compensation, not to exceed two full terms.

The duties of the board are primarily “to study and determine the park and recreational needs of the City and to make recommendations to the Mayor in respect thereof, including general and specific matters of policies and of recreational programs in furtherance of said needs of the City.”

The Board generally meets monthly on the first Tuesday at 6:00 p.m. in City Hall Council Chambers; the meetings are televised. Occasionally the Board may hold additional meetings to allow public information relating to proposed park improvements.

MEMBERS

Karla Donlin

Jennifer Foley, Chair

Troy Fritz

Buddy King

Chase Larson

Erin Perry

TERM EXPIRES

June 2019

June 2018

June 2019

June 2020

June 2021

June 2021

Ex Officio Members

Dave Masters, City Council

Appointed by the City Council

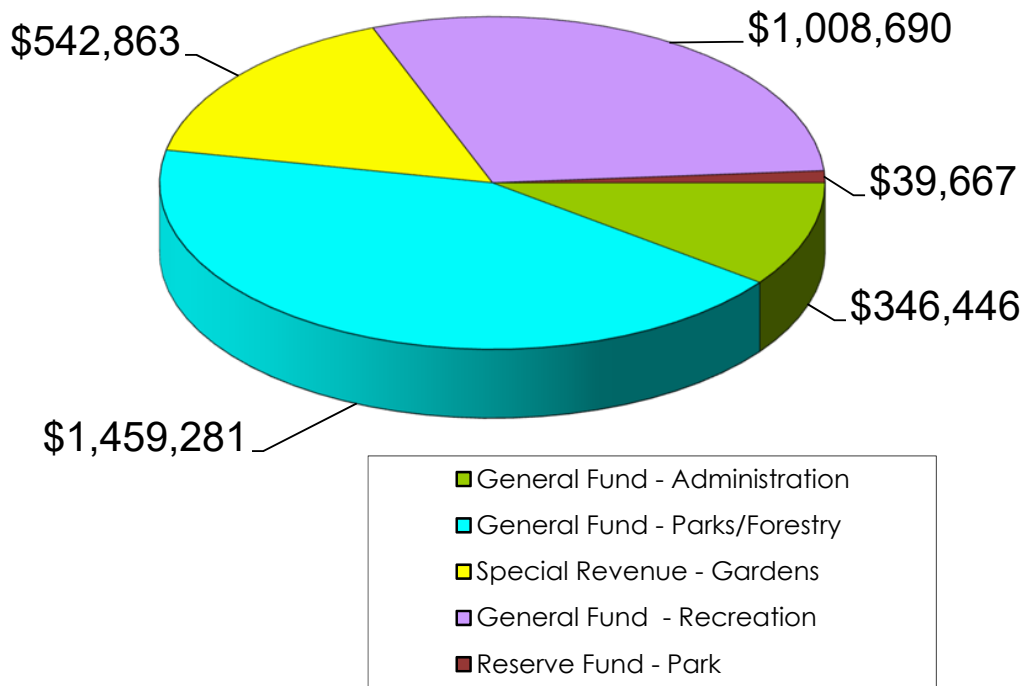
Jake Anderson, Planning
Commission

Appointed by the Planning Commission

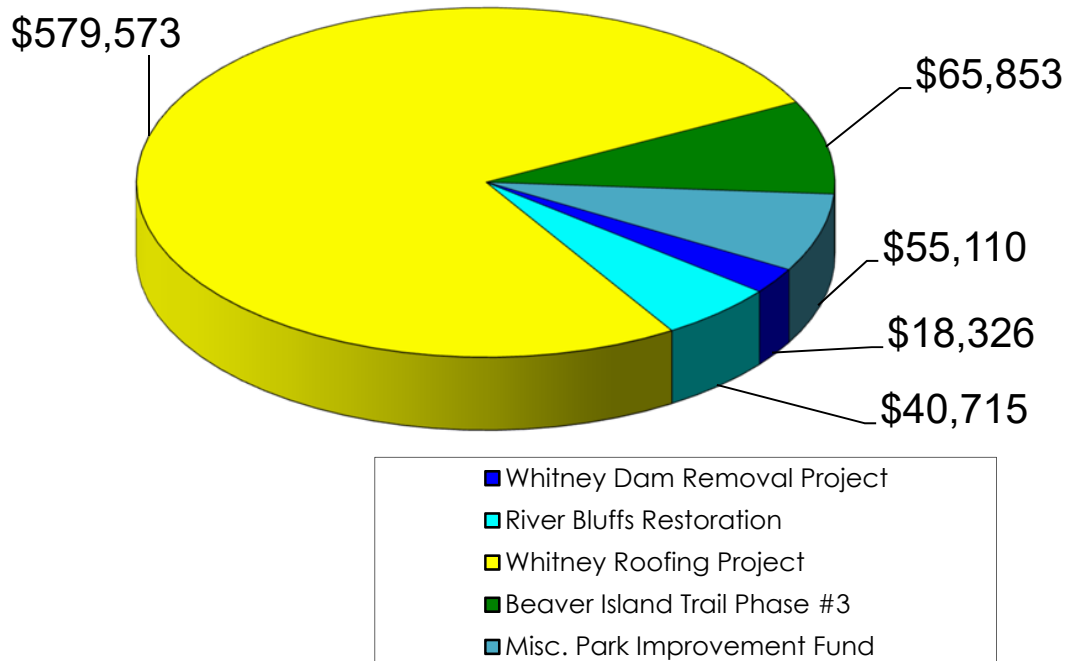
Jennifer Noble, Vice Chair, ISD 742

Appointed by I.S.D. 742

2017 PARK & RECREATION EXPENDITURES \$3,396,947



2017 PARK IMPROVEMENT FUND \$759,577



PARK & RECREATION DEPARTMENT

Highlights in 2017:

The year 2017 was a challenging yet gratifying period for the Park & Recreation Department. One challenge in the next term will be to effectively deliver park & recreational services to the public within available resources. Staff must also continue to seek additional public and private funds to provide the proper care, maintenance and programming to the rapidly growing park system.

The Department succeeded in the following categories for 2017:

Staff Changes: 2017 allowed for Leon Motl, Equipment Operator 1 (EO1), to be transferred to a 50/50 shared EO1. Arlan Rausch was promoted to the 100% EO1 position in Parks that Mr. Motl vacated. Promotions at the Street Department have allowed for Hayden Lane to become the newest 50/50 shared EO1. Alan Smith was hired as the Building Maintenance Worker (50/50 shared position with Aging Services). One continued challenge facing the Park & Recreation Department for 2017 is the number of current vacant positions and the ability to continue to provide current service levels for the growing park and recreation system.

Recreational Programming: Many new and exciting opportunities have and will continue to become available to our customers. Park & Recreation desires to continue to cultivate public recreational opportunities within our community. A review of all highlights can be found in the "Recreation" section of this report.

Equipment Purchases: No capital outlay was provided for equipment purchases in the 2017 budget.

Park and Playground Improvements: No capital outlay was provided for park or playground improvements in the 2017 budget. The department was successful in submitting a Community Development Block Grant application and received \$40,000 to procure playground equipment for 10-10 Park.

Trail Development: The long-range goals for trail development are to provide connections through the City to the north and west, to the Lake Wobegon Trail at St. Joseph, MN, and, to the south, to Warner Lake County Park. The Beaver Island Trail Phase #8 Project planning was significantly advanced in anticipation of receiving \$480,000 in federal funds in July of 2019.

Local Option Sales Tax and Park Improvement Fund Projects: In 2017, the following projects were completed or significant progress was made to enhance:

- Whitney Roofing Project
- Misc. Park Improvements
- Whitney Regional Park Dam Removal and Streambank Restoration Project
- River Bluffs Regional Park Restoration Project Phase #2

Park Reserve Fund Projects: The Park Reserve Fund budget provided for the procurement of new playground equipment (\$40,000) for Hidden Oaks Park and Cooper Hills Oaks Park.

No plats were approved by the City that contained parkland dedication and no funds were deposited in the Park Reserve account for in-lieu-of parkland dedication fees.

Public/Private Partnerships: The City Park & Recreation system annually receives substantial support from volunteers, grants, civic organizations, grants and neighborhood associations. The following noteworthy contributions/grants were received in 2017:

- **Central Minnesota Community Foundation - Clemens Family Fund** - Provided \$98,400 to support the Gardens.
- **Central Minnesota Community Foundation - Friends of the Gardens** - Provided \$35,000 to support the Gardens.
- **Munsinger Clemens Botanical Society** - Donated \$15,000 to support park vehicle equipment purchases within the Gardens.
- **St. Cloud Rotary Club** - Provided \$50,000 to support the St. Cloud Riverwalk Master Planning Project.
- **Recreation Programming Donations** - \$27,150 was received to support youth athletic program sponsorships (baseball, softball, volleyball, basketball and special events).
- **MNDNR** - \$61,357 in MNDNR Conservation Partners Legacy Grant funds were received to support the Whitney Park Sauk River Dam Removal and Streambank Restoration Project.
- **SRWD** - \$140,000 in MNDNR Legacy Clean Water Funds were received through the Sauk River Watershed District to support the Whitney Park Sauk River Dam Removal and Streambank Restoration Project.
- **MNDNR** - \$31,668 in MNDNR Conservation Partners Legacy Grant funds were received to support the native vegetation restoration work and oak wilt removal located at River Bluffs Regional Park.
- **Volunteer Program Hours** – 900 hours were logged by volunteers for 2017.

Park & Trail Land Acquisitions/Depositions: The City completed one land disposal opportunity in 2017 which transferred ownership of Hope Park (0.81 acres) to Anna Marie's Alliance and the St. Cloud HRA.

Miscellaneous Projects: The Park & Recreation Department staff continues to manage and perform new projects and programs, as well as accomplish major maintenance items such as:

- Alley right-of-way trimming and pruning program
- Boulevard and street tree pruning/removal program
- Awarded a Tree City USA Award for the 38th consecutive year by the National Arbor Day Foundation
- Delivered ice skating opportunities city-wide as well as opened Lake George for skating
- Operation, maintenance and guarding of wading pools and splash pads city-wide
- Delivery of the aquatics, sports complex, field-house and special event recreational programs
- Supported community events including: Granite City Days, Liberty Block Party, 4th of July Fireworks Event, MN Governors Fishing Opener, Hockey Day MN and Summertime by George!

Park Planning: The Park & Recreation Department was involved with major planning activities that engaged consultants, special interest groups and the public.

Major planning highlights:

- Completed the Park & Recreation Comprehensive Master Plan.
- Worked in cooperation with the St. Cloud Rotary and Mississippi Partners to master plan for the City of St. Cloud Riverwalk.
- Planned and coordinated annual grant program submittals to MNDNR, Federal Highway Administration and other agencies for park and trail projects.

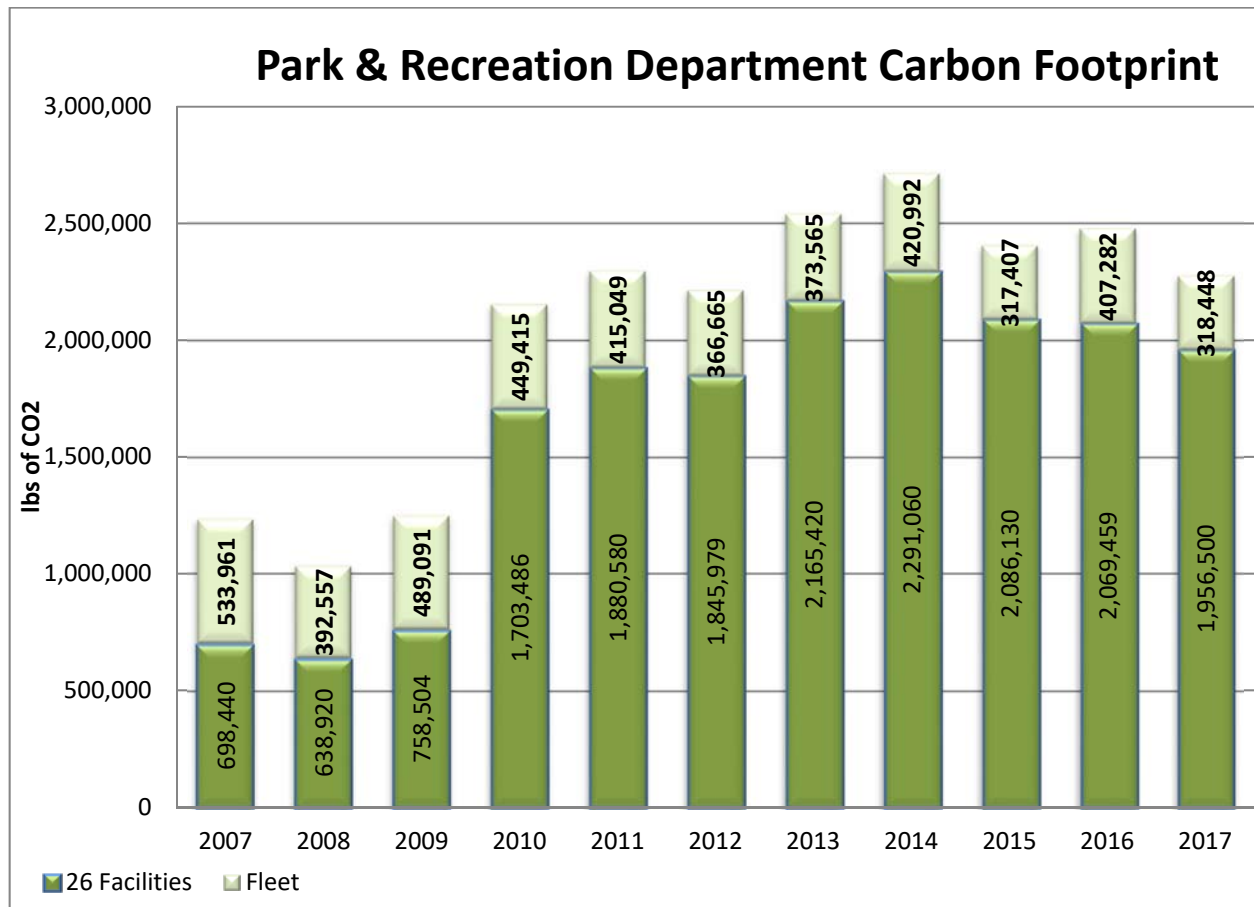
Planning groups and task forces have also been established to advise and make recommendations on certain City issues, park projects and park planning issues. Park administrative staff attends these group meetings, and often are charged with organizing and managing some of these groups. In 2017, staff was involved in the following:

- Friends of the Gardens Advisory Group
- St. Cloud Park & Recreation Advisory Board
- Rotary – Summertime by George event planning
- Greater Minnesota Regional Parks and Trails Group
- Neighborhood Association meetings
- 4th of July Fireworks Event Planning Committee
- Stormwater Regulation Compliance Group
- Munsinger Clemens Botanical Society Board of Directors
- Riverwalk Master Planning Oversight Committee
- Park & Recreation Master Planning Advisory Committee

Park & Recreation Department Performance Measures

	2008	2009	2010	2011	2012	2013	2014	2015	2016	2017
Population	66,503	66,855	67,145	65,842	65,633	65,986	66,297	66,297	66,297	66,297
Mini and Neighborhood Parks										
Acres of mini and neighborhood parks	600.51	599.78	599.78	606.25	590.37	590.37	590.37	590.37	576.92	576.11
Acres per 1000 persons	9.03	8.97	8.93	9.20	9.00	8.95	8.90	8.90	8.70	8.69
Natural Acres	350.97	350.97	350.97	357.47	347.47	347.47	347.47	347.47	335.62	335.62
Developed Acres	249.54	248.78	248.78	248.78	242.90	242.90	242.90	242.90	241.30	240.49
Regional and Community Parks										
Acres of regional and community parks	882.97	882.97	882.97	888.97	888.97	897.17	931.92	1015.69	1027.06	1027.06
Acres per 1000 persons	13.28	13.21	13.15	13.50	13.54	13.60	14.06	15.32	15.49	15.49
Natural Acres	617.82	617.82	617.82	623.82	623.82	623.82	658.57	699.57	700.64	700.64
Developed Acres	265.15	265.15	265.15	265.15	265.15	273.35	273.35	316.12	326.42	326.42
Total Acres of Parks										
Acres per 1000 persons	22.31	22.18	22.08	22.70	22.54	22.54	22.96	24.23	24.19	24.18
Annual budget cost per acre	\$1,527	\$1,446	\$1,474	\$1,979	\$2,032	\$2,055	\$2,116	\$2,005	\$2,138	\$2,119
Park & Recreation										
Number of FT employees	19	19	19	18.25	18.25	20.25	21.5	20.25	20.25	20.25
Number of seasonal employees	42	40	37	161	158	165	160	144	103	101
Number FTEs per 1000 persons	0.760	0.700	0.650	0.640	0.630	0.636	0.654	0.678	0.611	0.611
Revenue from fees and charges	\$424,484	\$393,012	\$408,918	\$411,808	\$423,631	\$436,529	\$425,100	\$453,500	\$404,935	\$372,842

(Note: 2011 was the first annual tracking year for the newly combined Park & Recreation Department.)



PARK AND RECREATION ADMINISTRATION

Objectives:

- Provide for the safe and efficient delivery of program services.
- Expand sources of revenue by promoting sponsorship and donations.
- Nurture collaborations between like service agencies in the community.
- Build and strengthen relationships with organizations in the community that provide athletic programming.
- Provide administration and operation of the Department in support of Recreation, Park Maintenance, Forestry and Gardens Programs.
- Plan and provide park development, capital improvement plans, construction, renovation and maintenance of all parks and park facilities.
- Prepare and solicit donations, grants and collaborative efforts with citizen groups and governmental agencies to better the delivery of services.
- Implement regional park and trail improvements with the local options sales tax for regional parks.
- Provide excellent customer service and public relations in representation of the City of St. Cloud.

Description of Services & Programs:

- Plan for, build and maintain the park infrastructure.
- Monitor and evaluate all Department personnel and activities.
- Prepare all Department program budgets.
- Plan for and develop park improvement projects.
- Provide for capital improvement projects.
- Solicit and apply for grants, donations and other funding for park improvement and activities.
- Receive and process citizen concerns relating to parks, programs and open spaces.
- Plan and implement recreational programs for the community that reach a diverse population with a wide variety of ages and cultures represented.
- Provide opportunities for adult athletic competition in a safe and supervised setting.
- Foster sportsmanship and skill development in youth programming.
- Encourage activities that promote intergenerational participation and strengthen families and neighborhoods.

Indicators of Success:

- Donated dollars and grants received as a percentage of operating expenditures and capital projects

- Total acres of parkland per capita
- Volunteer hours as a percent of overall budgeted hours
- Operation and maintenance expenditures per capita
- Net revenue per capita
- Revenue from grants, endowments and scholarships per capita
- Annual utility expenditures

Park and Recreation Administration consist of the Park & Recreation Director, Assistant Park & Recreation Director (vacant), Park & Recreation Office Supervisor, and Program Supervisors. Offices are located at the Lake George Municipal Complex and the Whitney Recreation Center.

The Park and Recreation Department has responsibility for the planning, protection, maintenance and improvement of City-owned parks, gardens, open spaces, trails, forestry and natural resources as well as designing and implementing recreational activities at those parks. The separate divisions of the Department accomplish these responsibilities with funding from general taxes, grants, program fees, and donations. There are 1603 acres of parks and open spaces, including nearly 24 miles of bike and walking trails.

Park and Recreation Administration is responsible for the day-to-day administration and operation of the Department in support of Park Maintenance, Forestry, Gardens and Recreation programs, including park development, park planning, capital improvement plans, budget management, construction, renovation and maintenance of park facilities. Park Administration prepares grants and donation requests, and works with service organizations to develop and implement adopt-a-park programs. Park Administration provides reservations and accommodations for Showmobile rentals, special events and contract services. Park Administration also provides public relations services and responds to public inquiries and concerns.

Park and Recreation Administration works closely with other City Departments, such as Public Works, Planning, Engineering, Finance and Community Services & Facilities, to provide a comprehensive parks system. The Park and Recreation Department provides administrative assistance to the Park & Recreation Advisory Board.

Park Administration is responsible for the Park & Recreation Annual Budget, Park Comprehensive System Plan and the Park & Recreation Annual Capital Improvement Plan.

FORESTRY

Objectives:

- Provide forestry-related services to all public parks, streets, boulevards and other properties to foster a healthy, safe and viable urban forest.
- Provide for the Noxious Weed Inspector Program.

Description of Services & Programs:

Plan, plant, prune and trim all public trees in City parks, boulevards, alleys and public lands as required; process tree trimmings into wood chips, firewood and landscape mulch for City use. Provide tree repair and cleanup of tree damage debris caused by storms. Maintain a public tree inventory. Identify and notify the public of Dutch Elm Disease, Oak Wilt, Emerald Ash Borer, dangerous and/or hazardous private trees, and to remove/dispose of these trees as defined by City ordinance; inspect, identify, remove and dispose of dead and diseased trees and stumps from City properties and City right-of-way as required. Provide for the Noxious Weed Inspector Program.

Indicators of Success:

- Designation as a "Tree City USA" through the National Arbor Day Foundation for the 38th consecutive year
- Number of trees planted annually without a designated budget line item specific to tree planting or purchasing of nursery stock
- Number of trees pruned and maintained annually; pruning cycle
- Annual successful sanitization and management of Dutch Elm Disease and Oak Wilt; investigation of all suspected cases of Emerald Ash Borer

The Forestry Program is responsible for all tree-related maintenance on City-owned property, including boulevard trees, as well as all trees in City-owned parks and other City lands. Forestry duties include, but are not limited to: inspections, maintenance pruning and trimming trees, removing and disposing of dead and diseased trees, stump removal, planting trees, alley clearing, maintaining a tree nursery, providing repair and cleanup of storm damaged trees, and processing tree waste into wood chips and firewood for City use. Forestry also provides for the Noxious Weed Inspector Program, installation of annual holiday lighting, snow plowing of over 30 miles of trails and sidewalks, and the enforcement of the Diseased Tree Ordinance.

Highlights in 2017:

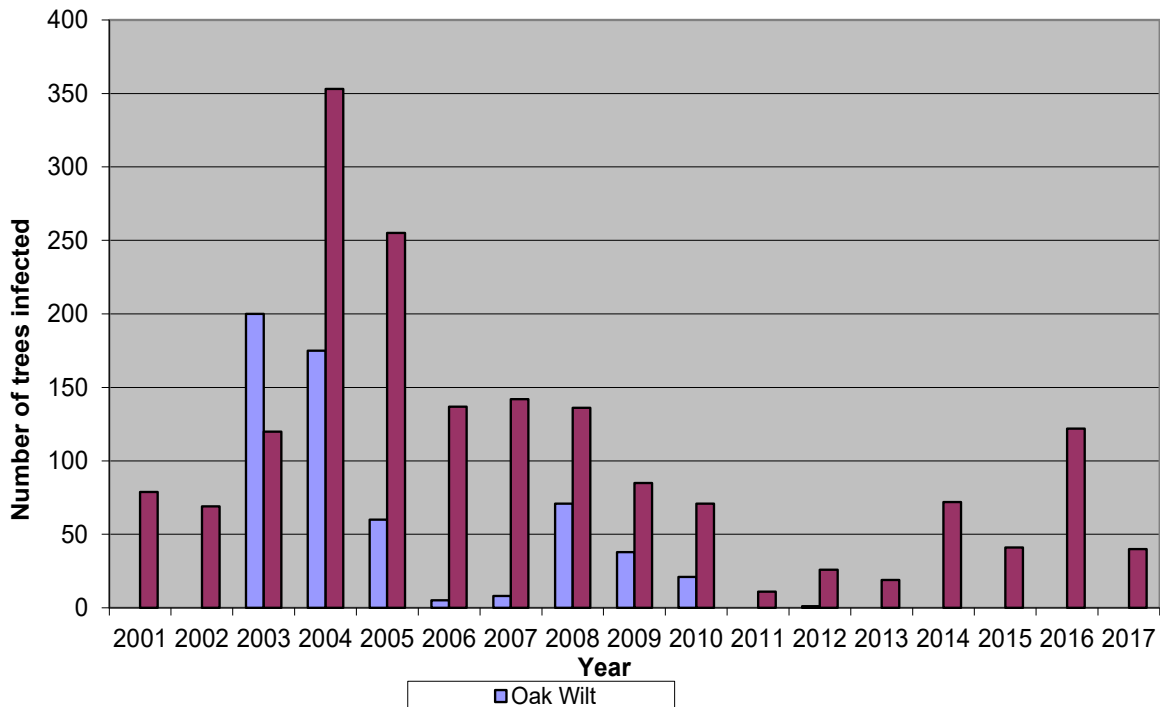
The tree ordinance allows City Staff to condemn and force the removal of dead, dying or diseased elm, oak and ash trees. This only pertains to Dutch Elm Disease (DED), Oak Wilt Disease (OWD) and Emerald Ash Borer (EAB).

An Oak Wilt pocket was identified in River Bluffs Regional Park in the spring of 2017. A primary and secondary plow line was made five feet deep as per industry standard no limit the spread of this disease to other healthy oak trees. After this was done a contractor was hired to remove the diseased trees inside this area and grind the stumps. This area has now been seeded and is in the process of being returned to prairie.

In 2017, 40 elm trees were identified, and condemned due to DED; of the trees condemned, 15 were privately-owned and 25 were publicly-owned. No oak trees were condemned on private property for OWD. No cases of Emerald Ash Borer were positively identified.

A gravel bed nursery was installed in 2012 at Whitney Park. This nursery consists of pea gravel that supports the growth of bare rooted trees to be transplanted. To date over 200 trees have been planted from the gravel bed nursery into our parks and right-of-way areas.

Dutch Elm Disease and Oak Wilt



GARDENS

Objectives:

- Provide daily care as required to maintain both Clemens and Munsinger Gardens in an attractive manner expected by the public.
- Provide a floriculture display in both Clemens and Munsinger Gardens that continues to attract visitors from throughout the State of Minnesota, the United States and internationally.

Description of Services & Programs:

Design the floral layout of Clemens Gardens and Munsinger Gardens; grow plants and maintain all flowers, bushes, grass and other plants in Clemens Gardens and Munsinger Gardens; provide for maintenance and repair of garden facilities and buildings in Clemens Gardens and Munsinger Gardens.

Indicators of Success:

- Gardens Program revenue by grants, gifts, contributions and donations.
- Total hours worked in the Gardens Program.

Munsinger and Clemens Gardens duties include: design and layout of the individual garden beds; planning for a variety of plants dependent upon location and desire; ordering appropriate seed and plant material; preparing and maintaining the greenhouse for growing seeds and plants; preparing flower beds to accept plants when the season allows transfer from the greenhouse to each designated garden bed; providing ongoing fertilizing, weeding, watering, and other care of planted flowers and other plants or shrubs; maintaining and repairing irrigation systems including garden fountains; maintaining and repairing garden pathways; maintaining garden tools, equipment, buildings and other garden related facilities.

There are two major City-operated flower gardens: Munsinger Gardens and Clemens Gardens. Munsinger Gardens was designed by Superintendent of Parks Joseph Munsinger and was created during the 1930's with assistance through government programs such as Works Progress Administration (WPA), which provided people an opportunity to work. Clemens Gardens began as an extension of Munsinger Gardens on adjacent parkland in 1986. In the 1990's, major donations provided by William and Virginia Clemens allowed the creation of six gardens along Kilian Boulevard. A variety of garden groups such as the American Horticultural Society and American Rose Society nationally recognize these Gardens.

The floriculture program for the Park & Recreation Department is responsible for growing over 100,000 annuals, perennials, shrubs and bulbs, mainly for use in the public display gardens. Plants are also grown for flowerbeds throughout the park systems and other City facilities. Munsinger Gardens and Clemens Gardens are a source of civic pride and it is Staff's goal to maintain them at the highest level possible. To accomplish this task, three full-time staff work year-round, with the help of the Park Maintenance Department and twenty part-time seasonal staff. Volunteers also assist in maintaining the Gardens.

This year the Special Events parking lot and access road were resurfaced with assistance from the Engineering Department. This much-needed improvement is very much appreciated.

In 2017, Munsinger Gardens and Clemens Gardens played host to thousands of visitors from throughout the State of Minnesota, the United States and even visitors from other countries.

There are four major groups, in addition to the City, that provide support for the Gardens:

- The Clemens Family created an Endowment, held at the Central Minnesota Community Foundation, to assist in the annual operation and maintenance of the Clemens Gardens.
- The Granite City Rotary Club has contributed funds and volunteer work for many years to the Munsinger Gardens.
- The Munsinger Clemens Botanical Society (MCBS) has provided volunteer labor and financial support to provide sustainability to the Gardens. MCBS has also conducted many events in the Gardens.
- The Friends of the Gardens group has provided financial contributions in support of the Gardens to provide long-term sustainability. In 2017, The Friends of the Gardens continued with their sponsorship program and filled all sponsor locations. A past donor wall was also constructed and installed on the Clemens Utility building.

The Gardens program has additional responsibilities for operations including the Gift Shop, special events, weddings and photography sessions.

Gift Shop:

The Gift Shop has completed the sixteenth year of operation. Built as an addition to the Clemens Gardens' restroom and storage building with donated funds, materials and labor from many St. Cloud enterprises, the Gift Shop provides the public an opportunity to purchase a garden-related product or other mementos.

The operation of the Gift Shop was placed out for bid in 2007 to private vendors. The Park & Recreation Department currently leases the Gift Shop space to Village Gift for operation. Revenue generated by lease fees in 2017 totaled \$6,000.

Special Events:

The Gardens have a Special Events Area in Munsinger Gardens, providing a space for weddings and other special events which can be reserved for a fee. In 2017, there were 26 events held and \$7463 received in revenue for the Gardens.

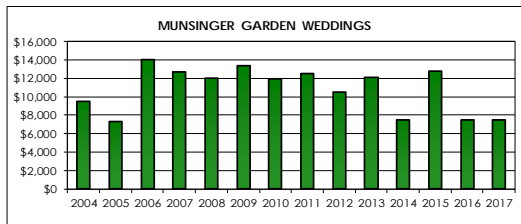
Photography Sessions:

Photography sessions for small groups are permitted in Munsinger Gardens. This provides an opportunity for the public to have formal posed photographs taken within the Gardens. There were 48 photography sessions held in 2017, generating \$3012 in revenue for the Gardens.

MUNSINGER GARDEN SPECIAL EVENTS

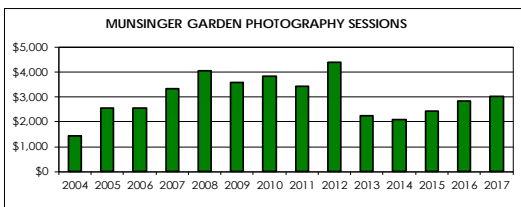
Weddings

	<u>2004</u>	<u>2005</u>	<u>2006</u>	<u>2007</u>	<u>2008</u>	<u>2009</u>	<u>2010</u>	<u>2011</u>	<u>2012</u>	<u>2013</u>	<u>2014</u>	<u>2015</u>	<u>2016</u>	<u>2017</u>
Revenue	\$9,504.00	\$7,304.52	\$14,056.06	\$12,699.70	\$11,984.49	\$13,346.69	\$11,909.72	\$12,515.59	\$10,478.69	\$12,100.00	\$7,500.00	\$12,781.00	\$7,516.38	\$7,462.66
Weddings Sessions Booked	61	42	82	70	75	77	65	69	63	63	43	56	36	33
Weddings Held	39	37	54	46	43	48	42	41	34	39	26	43	25	26
Dollars generated	\$10,272.00	\$8,641.46	\$15,975.76	\$13,869.60	\$13,490.09	\$13,754.50	\$12,603.65	\$13,471.90	\$11,128.69	\$12,600.00	\$8,500.00	\$13,527.00	\$8,536.45	\$8,160.60
Refunds	\$768.00	\$1,156.94	\$1,919.70	\$1,169.90	\$1,505.60	\$407.81	\$693.93	\$956.31	\$650.00	\$500.00	\$1,000.00	\$746.00	\$1,020.07	\$697.94



Photography Sessions

	<u>2004</u>	<u>2005</u>	<u>2006</u>	<u>2007</u>	<u>2008</u>	<u>2009</u>	<u>2010</u>	<u>2011</u>	<u>2012</u>	<u>2013</u>	<u>2014</u>	<u>2015</u>	<u>2016</u>	<u>2017</u>
Revenue	\$1,436.00	\$2,562.22	\$2,546.16	\$3,337.22	\$4,057.57	\$3,572.28	\$3,843.78	\$3,415.00	\$4,399.00	\$2,255.00	\$2,095.00	\$2,436.00	\$2,835.74	\$3,011.90
Photography Sessions Booked	29	53	56	62	86	62	65	56	87	38	43	49	61	51
Photography Sessions Held	25	50	51	55	74	56	62	51	80	36	39	49	56	48
Dollars generated	\$1,502.00	\$2,642.56	\$2,678.00	\$3,519.70	\$4,083.63	\$3,733.00	\$3,843.78	\$3,415.00	\$4,502.00	\$2,255.00	\$2,095.00	\$2,436.00	\$2,915.20	\$3,011.90
Refunds	\$66.00	\$80.34	\$131.84	\$182.48	\$26.06	\$160.72	\$0.00	\$0.00	\$103.00	\$0.00	\$0.00	\$0.00	\$79.46	\$0.00



PARK MAINTENANCE

Objectives:

- Provide high quality maintenance, mowing and repair services for all parks, park facilities and park equipment.
- Provide park development, construction and renovation by utilizing park staff or seeking qualified vendors for services.
- Provide a safe, secure, clean and aesthetic park environment for all users.

Description of Services & Programs:

Plan for development, construction, maintenance, mowing and repair of public park facilities and open spaces; inspect all parks and park facilities to ensure user safety. Plow and remove snow at all park facilities and other City facilities as directed; prepare and maintain ice skating rinks and hockey rinks including snow removal. Maintain and repair all park and recreation equipment and vehicles. Prepare and maintain all wading pools and splash pads.

Indicators of Success:

- Cost of maintenance service measured per acre of parkland
- Donated dollars and labor as a percentage of operating expenditures and capital projects
- Percent of deficient (by industry standards) facilities and playgrounds replaced annually
- The ability to add new capital infrastructure and facilities annually with minimal or no increase in annual operating budget to offset new facilities

Park Maintenance crews are responsible for the overall upkeep of all City-owned parks, trails, park facilities and park equipment. They maintain all mowing equipment, forestry equipment, and outdoor equipment and facilities used by the Recreation Department.

The maintenance programs include a periodic, well-documented inspection of vehicles, buildings, park and play equipment. Park open spaces are also periodically inspected to ensure that all equipment and facilities are in safe and usable condition.

Highlights in 2017:

Tasks accomplished throughout the year by the maintenance crews include:

Spring/Summer/Fall

- Clean up of parks, trails and other public spaces
- Regular garbage and rubbish pickup in parks

- Inspection and repair of irrigation systems
- Regular inspection and repair of play equipment
- Regular inspection and repair of park facilities, including lighting systems
- Prepare Community Gardens for public use
- Inspect, repair and store winter use equipment
- All Park and Recreation staff attend safety training
- Regular mowing of parks, trails and public spaces
- Prepare for the season and maintain pools city-wide
- Inspect, identify and notify public to abate noxious weeds
- Assist with special event activities in the community
- Restroom and janitorial duties
- Provide park improvements
- Inspect and prepare ice skating rinks for winter use
- Remove from storage, inspect, repair and ready winter use equipment

Winter

- Regular snow removal from park facilities, trails, sidewalks, and skating rinks
- Develop ice skating rinks through flooding and spraying as weather permits
- Repair park equipment
- Safety program is reviewed and updated
- Snow plowing of public streets and parking areas, as required

Projects

- Preparations made for Governor's Fishing Opener in several Parks
- Preparations made for Hockey Day MN
- Plans made to replace sod after Hockey Day MN
- Oak Wilt pocket removed from River Bluffs Park
- Playgrounds purchased for several Parks
- Butler Park seeded and sign installed for grand opening
- Community Gardens prepared for public use
- New Park rules signs installed
- Preparations made for Granite Games
- LED lights installed in Park buildings
- Selfie station installed along Beaver Island Trail
- Holiday decorations put up for the season
- Holiday tree installed and decorated for the season
- Granite City Days activities supported
- Lake George ice shaved in preparation for Hockey Day MN
- Fourth of July preparations and clean-up following events

RECREATION

Objectives

- To provide quality programs, services and facilities which build a strong and healthy community for all
- To provide for ongoing community engagement and celebration

Description of Services & Programs

Plan for and provide residents and visitors with quality park facilities and experiences that help strengthen our community through engagement and communication. Provide for aquatic, outdoor sports complex, field house and winter recreational opportunities.

Indicators of Success

- Revenue generated by recreation fees for services annually
- Number of participants in recreational programs per capita

Highlights 2017

Recreation staff continues to strive and provide quality programming and facilities for the City of St. Cloud Park and Recreation. This include adult athletics, youth recreational sports, special events and facility management.

Public/Private Partnerships

The Recreation Division solicits donations, sponsorships and partnerships to defray the cost of programming:

- | | |
|------------------------|---------|
| • ABC Kinder Olympix | \$650 |
| • Pumpkinfest | \$9,300 |
| • Winter Wonderland | \$3,200 |
| • Outdoor Movie Series | \$5,000 |
| • Youth Programming | \$9,000 |

Total **\$27,150**

Community Aquatic Program - This collaboration between Park and Recreation and District 742 Community Education provided swimming instruction to 1,174 individuals.

Outdoor Endeavors - St. Cloud State University- Collaboration between Park and Recreation and SCSU to run the Lake George paddleboat and Outdoor Boat House Program.

Miscellaneous Programs

The Recreation Division continues to manage and execute a variety of recreation activities, including adult and youth sports, special events and facility rentals:

Whitney Recreation Center

- 3,000 open gym
- 14,200 walking track
- 1,700 fitness room
- 6,900 pickleball
- 1,100 Kinder Gym
- 1,200 court rentals, 7,000 users
- 109 adult volleyball teams, 708 matches, 6,800 users
- 24 youth volleyball camp, 9 hours, 72 users, 162 users
- Northern Paddles 837 court hours and 2,200 users
- 13 Pickleball teams, 330 hours, 208 users
- 13 basketball and volleyball tournaments, serving 26,000 users
- 16 events at Whitney Recreation Center, serving 10,000 users
- 28 volleyball and basketball games and 420 practice court hours utilized by St. Cloud Technical and Community College, 4,400 users

Whitney Sport Complex

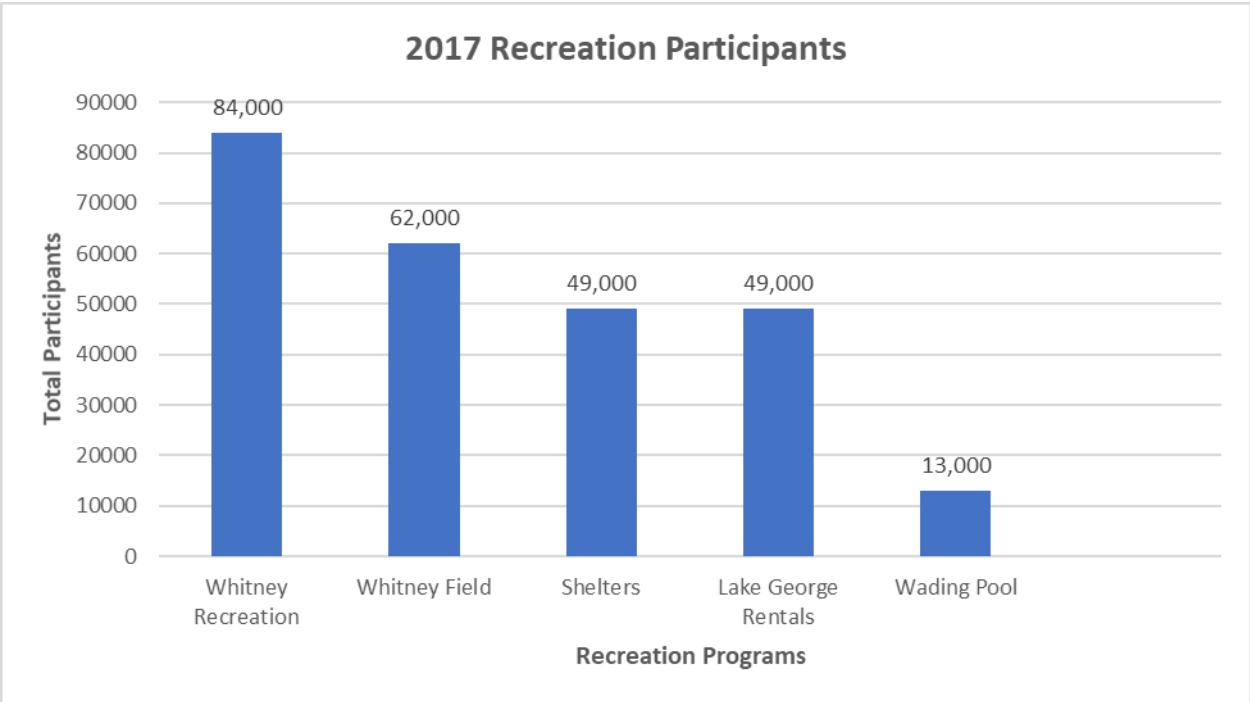
- 47 adult softball teams, 348 games, 10,500 users
- 225 summer baseball/softball participants, 84 field uses, 2,400 users
- Softball/baseball practices 330 fields uses, 7,700 users
- 5 softball/baseball tournaments, 181 games, 15,000 users
- 3 events at Whitney Park, serving 19,000 users
- 190 soccer field practices and games, 7,000 users

Aquatics

- 1,174 participants in St. Cloud Community Aquatic Swim Program
- 12,660 wading pool attendees

Lake George Rentals/Special Events

- Supported community events including the Granite City Days Festival and Winter Nights and Lights Parade
- 492 room rentals at the Lake George Municipal Complex, serving 12,200 participants
- 42 special events (not including Summertime by George) held in Eastman Regional Park, with estimated participation of 36,600
- 8 sessions and 140 youth participants in the Summer Fishing Club
- Special events including Kinder Olympics, Pumpkinfest, Winter Wonderland, Granite City Days Fishing Derby and Outdoor Movie attracted over 15,000 participants.
- 337 shelter and park rentals, serving 49,000 participants



REGIONAL PARKS & TRAILS

GENERAL PARK INFORMATION

NAME	LOCATION	Year Acq.	How Acq.	Acres Total	Ac. Left Natural	NOTES
						Old name, adopted, etc.
1 Eastman	425 East Lake Blvd.	1906	Ded. & Purch.	25.65	10.00	Next to Tech. High School - Lake George - Mun. Pool
2 Riverside	1725 Kilian Blvd.	1910	Ded. & Purch.	55.72		Some parcels donated - Clemens (7 Acres) & Munsinger Gardens (14 acres) - Next to Miss. R.
3 Wilson	625 Riverside Dr. NE	1921	Dedicated	29.60		Next to Miss. R.
4 Whitney Memorial	1529 Northway Dr.	1933	Dedicated	143.50	46.00	Next to Sauk R. - Flood plain & woods - Whit. Rec. Center - Whit. Senior Ctr.
5 Beaver Island Park	1503 3rd Ave. So.	1956	Purchased	18.02		Next to Miss. R. - Park Service Center
6 Knights of Columbus	715 54th Ave. No.	1959	Fed. Surplus	9.71		Next to Sauk R. - Adopted in 1992 by the Knights of Columbus (St. Cloud Area)
7 Mun. Athletic Center	5001 8th St. No.	1959	Fed. Surplus	19.36		Next to Sauk R. - Indoor ice rinks - baseball -(golf leased from VA)
8 Pine View	6540 Saukview Dr.	1976	Ded. & Purch.	40.90	35.00	Next to Sauk R. - Flood plain & woods - 5.9 acres purchased in 1997 from Moose
9 Heritage	225 33rd Ave So.	1979	Purchased	92.50	90.00	Heritage Nature Center - Wet lands & woods
10 Greenway Trail	Whit. to No. Jr. H. S.	1985	Dedicated	3.62		Blk. topped trail
11 Beaver Is. Trail	10th St. So. to 38rd St. So.	1991	Purchased	28.75	20.00	Blk. topped trail close to Miss. R. (from the river dam south to 38th St. S.)
12 Scenic River Trail	Along C.R.75 (33rd to 10th)	1995	Purchased	34.16	34.16	Blk. topped trail (Purch. railroad mainline from 33r St. So. to 3rd St. No. from BNRR)
13 Edgewater Corridor	4390 Clearwater Rd.	1996	Dedicated	5.57	5.57	Next to Miss. R. - river bluff land for future trail
14 Neenah Creek Regional Park	3585 County Road 136	1999	Purchased	280.00	213.10	Undeveloped open space - crop land, wooded, creek, & wetlands
		2005	Purchased		30.81	30.81 acres Paulson Parcel - Part of Neenah Creek - Undeveloped Woodland
15 River Bluffs Regional Park	3822 Clearwater Road	1999	Purchased	190.00	175.00	Laudenbach Parcel - crop land, Miss. River floodplain, & woods bluff
16 George Friedrich Park	2351 University Drive SE	2015	Trade	50	41	Friedrich

COMMUNITY & REGIONAL PARKS & TRAILS

1027.06

700.64

	Parks Number of	Acres Total	Acres Natural	Acres Developed
NEIGHBORHOOD & MINI PARKS	77	576.11	335.62	240.49
COMMUNITY & REGIONAL PARKS & TRAILS	16	1027.06	700.64	326.42
TOTAL ALL PARKS	93	1603.17	1036.26	566.91

NEIGHBORHOOD & MINI PARKS

GENERAL INFORMATION

	NAME	LOCATION	Year Acq.	How Acq.	Acres Total	Ac. Left Natural	NOTES
							Old name, adopted, etc
1	BARDEN	720 5th Ave. So.	1855	Dedicated	2.50		Next to SCSU
2	ST. CLOUD/SPALT	413 3RD AVE NE	1884	Dedicated	1.68		Next to Jefferson School - Renamed for Sister City 2009
3	CENTRAL	2807 4TH ST NO	1887	Dedicated	1.64		
4	LIONS I	2902 7TH ST NO	1888	Dedicated	0.56		Adpt. in 1986 by Lions Club (Old Name Fountain Park)
5	HESTER	1020 6TH AVE NO	1910	Dedicated	12.82	1.00	City water plant next to Miss. River. Adp in 2008 by Hester Park Neighborhood Ass
6	COLONIAL GARDEN	45 22ND AVE SO	1919	Dedicated	0.72		
7	SEBERGER	2001 2ND ST NO	1926	Dedicated	3.62		
8	CALVARY HILL	1800 17TH ST SO	1928	Dedicated	23.22		City water tower (acquired lot 0.8 ac in 2003)
9	VOCATIONAL	1601 8TH AVE NO	1940	Dedicated	0.30		
10	PANTOWN	2915 9th St. No.	1941	Dedicated	3.59		Next to Madison School & St. Peter's School
11	TRIANGLE	700 13th St. No.	1953	Dedicated	0.24		Undeveloped
12	McKINLEY	1009 McKINLEY PL SO	1955	Dedicated	3.78		
13	CENTENNIAL	1725 CENTENNIAL DR	1956	Dedicated	12.50		Next to St. Paul's School
14	SOUTH SIDE	805 13TH ST SO	1956	Purch.	4.83		Donated 5.67 acres in 2000 to B&G Club for new Facility
15	REACH-UP	1114 9TH AVE SE	1959	Purch.	3.24		Church purch. in 1989 Joint use w/ ReachUp
16	WOODLAND HILLS	1705 MAPLE LANE	1964	Dedicated	12.89	8.96	4.96 acres added in 2001 plat 6 (all wet land)
17	JAYCEES	1111 37TH AVE NO	1969	Fed. Surplus	4.86		Veterans - Adp. in 1989 by Jaycees
18	WESTWOOD	720 DRIFTWOOD DR	1969	Dedicated	2.74		Next to Westwood School Adp. by Liberty Bk.
19	ROTARY	1507 Goettens Way	1969	Dedicated	5.00		Goettens - Adp in 1979 by Rotary
20	SCHMIDT	751 18th St. So.	1972	Purchased	5.00		Purchased from the SD 742
21	RAILROAD	2007 11TH AVE SO	1972	Dedicated	0.74		
22	MADISON	3050 14th Street North	1972	Dedicated	1.74		
23	COUNTRY CLUB PARK	3150 Clearwater Rd.	1975	Purch.	9.00	9.00	Old dump site - wooded undeveloped
24	RAYMOND	324 RAYMOND AVE NE	1975	Purch.	3		Donated .075 acres in 2009 to B&G Club for new Facility
25	ROTARY EAST	901 MICH AVE SE	1976	Dedicated	2.02		exchanged W/ SCSU Adp. in 1986 by Rotary
26	NORTHWAY	2450 15TH ST NO	1978	Dedicated	5.00		
27	HIGHWAY/CARLIN	2400 W. St. Germain	1981	Dedicated	3.20		Includes Vacated road R/W
28	BBC	140 37TH AVE NO	2008	Donat.	0.5		New park constructed by Plaza 15 project to replace old BBC Park
29	AURORA	1532 31ST AVE NO	1985	Purch.	0.45		
30	GOLDTHORPE	10 12TH AVE SE	1987	Purch.	0.69		Adp. in 1987 by Goldthorpe Family
31	LANSING	West of Beaver island Trail	1994	Purch.	15.6	15.6	Natural Area next to Miss. River in Flood Plain
32	KIWANIS	1985 15Th Ave. SE	1994	Dedicated	2.40		Adp in 1994 by Kiwanis
33	DIOCESSE	3701 Maine Prairie Rd.	1994	Purch.	5.88		
34	WESTWIND	1600 Westwind Road	1995	Merger	18.60		Three parcels (1-92952-000 0-929523-000)
35	CHANTRY	4108 Otley Road	1995	Merger	4.00		
36	CONCORD	3108 Walden Way	1995	Merger	7.00	3.50	Wet lands & pond
37	CRESTVIEW	1859 Haller Way	1995	Merger	3.10	1.30	Wet lands (2002 - Add 0.39 ac. Natures Ridge Addit.)
38	D. J. VOTH	3625 Greenway Road	1995	Merger	0.80	0.80	
39	JAVIC	2801 Atwood Dr.	1995	Merger	3.31	3.31	Wet lands & Pond
	NEIGHBORHOOD & MINI PARKS			TOTAL	192.76	43.47	

NEIGHBORHOOD & MINI PARKS GENERAL INFORMATION

	NAME	LOCATION	Year Acq.	How Acq.	Acres Total	Ac. Left Natural	NOTES
							Old name, adopted, etc
40	PRAIRIE ROSE	1850 Praire Rose Lane	1995	Merger	3.00		Undeveloped
41	RIDGE WOOD	931 Brenda Lee Drive	1995	Merger	4.30		
42	ROLLING RIDGE	6630 Kenwood Road	1995	Merger	9.00	3.00	Wetlands
43	ROSE RICHTER	1655 38th Street South	1995	Merger	4.30	2.30	Wooded
44	SUNSET	1676 Pattison Road	1995	Merger	0.40	0.40	Undeveloped open space
45	SIGNAL HILLS	1800 Oregon Trail	1995	Merger	2.00		
46	SOUTHVIEW	6000 19th Street North	1995	Merger	5.00		
47	TIFFANY	1824 Meadowrose Blvd.	1995	Merger	5.80	5.00	Wet lands (2 parcels)
48	W. RIVER MEADOWS	1825 Case Lane	1995	Merger	6.01	0.00	Knollwood Plat - add 2.51 ac. In 2002
49	CASE	1350 Co. Rd. 134	1995	Merger	0.80	0.80	Undeveloped Next to Sauk River
50	PLUM TREE	3601 Plum Creek Dr.	1995	Merger	4.00	3.00	Wet lands & pond
51	SERENITY	1601 28th St. So. (a.k.a. Nat. Tr.)	1995	Merger	75.00	75.00	Wet lands & willow
52	HIDDEN OAKES	2821 21st Avenue So.	1995	Merger	1.50	1.00	Wet lands
53	STERLING HEIGHTS	2420 18th Ave. SE	1996	Dedicated	11.22	5.00	Wet lands - Undeveloped open space
54	CIMARRON	Crescent Ridge Trail	1997	Dedicated	8.41	5.00	Wet lands - Undeveloped open space
55	COOPER HILLS/OAKS	2051 30th St. So.	1997	Purch.	37.00	35.00	2 acres dedicated & acquired thru merger in 1995 - Wet lands/wooded
56	ANGUSHIRE	4101 4th St. So.	1997	Dedicated	0.66		Undeveloped (Angushire Meadows One)
57	BLACK WALNUT	5850 Spruce Street	1997	Donat.	0.66	0.00	Adpt. in 1998 by neighborhood (Kramer)
58	SOUTHWOOD	3500 17TH AVE SO	1997	Dedicated	2.91	0.00	Adpt. in 2000 by neighborhood
59	PIONEER	2530 Pioneer Lane	1997	Purch.	2.53	1.00	Wooded - Undeveloped
61	BARTHELEMY OAK FOREST	24th St. So. & CR136	1999	Purchased	17.00	17.00	BIG WOODS - State Grant Funded w/ Protective Covenants
62	OAK SAVANNAH	24th St. SE.	1999	Dedicated	5.45	5.45	Wooded - 2 parcels - To be left in a natural state
63	OAK	24th St. SE. & CR 8	1999	Dedicated	1.00	0.00	Undeveloped w/ holding pond & large power tower
64	TOWER	20th St. SE.	1999	Dedicated	1.00	0.00	Undeveloped water tower area
65	LIONS II	4310 Dublen Dr.	2000	Dedicated	1.67	0.00	(Angushire Meadows Four Plat) adjacent to Waite Park Lions Park
66	QUAIL POND PARK	5605 Spruce Street	2000	Dedicated	6.80	6.80	Undeveloped (Quail Medows Plat)
67	PRAIRIE PARK	2125 Cypress Road	2001	Annexed	1.55	0.00	LeSauk Township Petition
68	GLENVIEW PARK	Glenview Lane	2002	Dedicated	2.47	0.00	Undeveloped (for playground)
69	AMBLEWOOD PARK	CR120 & Amblewood Drive	2002	Dedicated	4.16	0.00	Undeveloped (for playground)
70	DWYER	C.R.75 & 24th St. South	2002	Dedicated	2	0.00	Undeveloped (for playground)
71	CHERRY	701 47 Ave. NE	2004	Dedicated	6.23	0.00	Undeveloped (for playground)
72	HERITAGE WOODS PRE.	2231 Orchid Loop S.	2004	Dedicated	34.6	34.6	Plat dedicated as Preserve
73	ORCHID	3325 26 Ave. S	2004	Dedicated	0.72	0.72	Owned by City - Maintained by Development Assoc.
74	WESTWOOD PARKWAY	(Several Outlots) Westwood PUD	2004	Dedicated	81.38	60	Wetlands and open space that has improved trails with small picnic/rest areas
75	BOULDER RIDGE TRAIL	Along and east of CR 74	2004	Dedicated	1.31	0.00	Improved for bituminous trail (0.4 miles).
76	MILL POND	South CR #8 (Benton County)	2006	Dedication	23.06	23.06	Undeveloped - mostly wetland w/some wooded higher areas for future trails.
77	SAUKVIEW	530 Saukview Drive	2006	Dedication	1.52	1.52	
78	DEER CREEK	Park Outlot	2011	Dedicated	6.5	6.50	Undeveloped
79	BUTLER	312 5 Ave. N	2016	Purchased	0.43		Undeveloped
40				TOTAL	383.35	292.15	

NEIGHBORHOOD & MINI PARKS	1	39	192.76	43.47
	2	38	383.35	292.15
TOTAL		77	576.11	335.62

2017 PARK TRAILS GENERAL TRAIL INFORMATION

NAME	LOCATION	Type of Trail Surface	Number Of Miles	Park Trail	Corridor Trail	NOTES
Beaver Island Park	1503 3rd Ave. So.	Bituminious	0.2	X		Connecting link - Trail Head with Restrooms & Parking
Beaver Is. Trail (2013)	33rd St. So. - 38th St. So.	Bituminious	1		X	
Beaver Is. Trail	10th St. So. - 33rd St. So.	Bituminious	2.5		X	Lineal trail next to Miss. R. (Purch. railroad spur, mainline to dam from BNRR)
Beaver Is. Trail (2000)	10th St. So thru SCSU	Various	0.6		X	Lineal trail - River Walk & Trail thru campus - surface is concrete & paving stone
Beaver Is. Trail (2004)	Civic Center portion	Concrete	0.8		X	Sidewalk & lineal trail
Beaver Is. Trail (2014)	Heatherwood Road	Bituminious	0.5		X	
Beaver Is. Trail (2015)	Clearwater Road	Bituminious	0.75		X	
Beaver Is. Trail (2016)	Mississippi River at RECC	Concrete	0.4		X	
				6.75	TOTAL	
Concorde Park	3108 Waldon Way	Bituminious	1	X		Connecting link through the park and neighborhood
Eastman	425 East Lake Blvd.	Various	1.2	X		Paver trail around Lake George; bituminious trail around entire park.
Hester Park	1020 6th Ave. No.	Bituminious	0.5	X		Trail in the park next to Mississippi River
Heritage	225 33rd Ave So.	Bituminious	1	X		Looping trail in park, Heritage Nature Center - Wet lands & woods
Heritage	225 33rd Ave So.	Various	2.5	X		Looping and connecting links in park, grass, wood chipped, & granite chipped trails
Westwood Parkway	Westwood PUD	Bituminious	2.1	X		
				8.3	TOTAL	
Northway Trail	Whit. to No. Jr. High to Park Dr.	Bituminious	0.7		X	0.2 mile added in 2001 named Wier's trail
Pinecone Road Trail	North St. Cloud Pinecone Rd.	Bituminious	0.6		X	
Granite City Crossing	SW St. Cloud @ T.H.15	Bituminious	0.3		X	
West Metro Cooridor	E to W trail at WMC	Bituminious	0.6		X	
GC crossing/Southway	33rd Street S./TH15 to CR75	Bituminious	0.4		X	
				2.6	TOTAL	
Neenah Creek R. Park	3585 County Road 136		0	X		Undeveloped open space - For future trail, future recreation, & natural areas
River Bluffs R. Park	Laudenbach Parcel		1	X		Undeveloped next to Miss. R. - For future trail, future recreation, & natural areas
				1	TOTAL	
Scenic River Trail (2001)	33rd Ave. So. to 10th St. So.	Bituminious	2.5		X	Lineal trail next to C. R. 75 (Purch. railroad mainline from BNRR)
Scenic River Trail (2004)	10th St. So. to 3rd St. No.	Bituminious	0.6		X	Lineal trail next to Cooper Ave (Purch. railroad mainline from BNRR)
				3.1	TOTAL	
Boulder Trail (2004)	East of CR 74	Bituminious	0.43		X	Lineal trail next to C. R. 74 (dedicated 2004)
				0.43	TOTAL	
Whitney Memorial	1529 Northway Dr.	Bituminious	2.5	X		Looping trail and connecting trail links around and through the park
				2.50	TOTAL	Whit. Recreation Fields - Whit. Rec. Center - Whit. Senior Ctr.

24.68 Miles of trail improvements

2017 Statistics - Playgrounds

Name	Address	Park Estab.	Component					Swings	Splash Pad	Wading Pool	Restrooms	Shelter	Ice Skating	Hockey Rink
			Slide	Whirl	Climber	Swings	Swings							
1 Aurora	1532 31st Ave N	1985	2016				2016							
2 Barden	720 5th Ave S	1855		2005	2005		2005			Not Accessible				
3 BBC	140 37th Avenue North	2008	2008											
4 Black Walnut	5850 Spruce St	1997	1997	1997			1997							
5 Calvary	1800 17th St S	1928		2005	2005	2005	2005			Port-a-Pot				
6 Centennial (2)	1725 Centennial DR	1956	2006	2006	2006	2006	2006		X	Port-a-Pot		X	X	
7 Central	2807 4th St N	1887	2006	2006		2006	2006							
8 Chantry	4108 Otley Rd	1995	1997	1997			1997							
9 Cimarron	Crescen Ridge Trail	1997		1998	1999		1999							
10 Colonial Garden	45 22nd Ave S	1919	2006	2006	2006	2006	2006							
11 Concord	3108 Walden Way	1995		2007		2007	2007							
12 Cooper Hills/Oaks	2051 30th St S	1997		2004	2004		2004							
13 Crestview	1859 Haller Way	1995	2002	2002			2002							
14 Diocese	3150 Maine Prairie Rd	1994		2004	2004		2004					X		
15 DJ Voth	3625 Greenway Rd	1995				1995	1995							
16 Eastman (Lake George)	425 Lake Blvd	1906	2007	2007		2007	2007	2007		Yes	Yes	Lake		
17 Goldthorpe	10 12th Ave SE	1987		2016			2016							
18 Hester	1020 6th Ave N	1910	2006	2005	2005	2005	2005		X	Yes				
19 Hidden Oaks	2821 21st Ave S	1995		2006	2006	2006	2006							
20 Highway/Carlin	2300 W. St. Germain	1981	2012				2012					X		
21 Jaycees	1111 37th Ave N	1969	2012				2012			Port-a-Pot				
22 Kiwanis	1985 15th Ave Se	1994	1995	1995			1995							
23 Knights of Columbus	715 54th Ave N	1959	1993	1993			1993			Yes	Yes			
24 Lions I	2902 7th Ave N	1888	2016				2016							
25 Lions II	4310 Dublin Dr.	2000		2005	2005	2005	2005			Yes	Yes			
26 Madison II	1536 31st Ave N	1972		2007		2007	2007							
27 McKinley	1009 McKinley Pl S	1955		2005	2005	2005	2005					X		
28 Northway	2450 15th St N	1978	2001	2001			Tire Only					X	X	
29 Pantown	2815 9th St N	1941	1998	1998			1998		X	Port-a-Pot		X		
30 Plum Creek (Plum Tree)	3601 Plum Creek Dr	1995		2007		2007	2007							
31 Prairie	2125 Cypress Rd	2001		2004	2004		2004							
32 Railroad	2007 11th Ave S	1972		2007		2007	2007							
33 Raymond	320 Raymond Ave NE	1975	2008 (5-12)							Yes	Yes	X	X	
34			2009 (2-5)											
35 ReachUp/10-10 (3)	1114 9th Ave SE	1959	1992	1992	1992	1992	1992			Yes	Yes			
36 Ridgewood	931 Brenda Lee Dr	1995	2007	2007	2007	2007	2007							
37 Riverside	1725 Kilian Blvd	1910	2004/05	2004	2004	2004	2004	2004		Yes	Yes			
38 Rolling Ridge	6630 Kenwood Rd	1995		2005	2005	2005	2005					X	X	
39 Rose Richter	1655 38th St S	1995		2005	2005	2005	2005							
40 Rotary	1507 Goettens Way	1969		2007	2007	2007	2007		X	Yes	Yes	X	X	
41 Rotary East	901 Michigan Ave SE	1976	2007	2004	2004	2004	2004							
42 Schmidt	751 18th St S	1972		2008	2008	2008	2008					X	X	
43 Seberger	2001 2nd St N	1926	X	X			Tire Only		X	Yes	Yes	X		
44 Signal Hills	1800 Oregon Trail	1995		2006		2006	2006							
45 Southside	805 13th St S	1956	1998	1998		1998	1998		X	Yes	Yes		X	
46 Southview 90	6000 19th St N	1995		2007		2007	2007					X		
47 Southwood Heights	3500 17th Ave S	1995	2005	2005		2005	2005				Yes	X		
48 Saint Cloud/Spalt	415 3rd Ave NE	1884		2006		2006	2006		X	Port-a-Pot				
49 Tiffany	1824 Meadowrose Blvd	1995	1997	X		1997	Tire Only							
50 Westwind	1600 Westwind RD	1995	1995	1995		1995	1995							
51 West River Meadows	1825 Case Lane	1995	1995	1995			1995							
52 Westwood Park/School	720 Driftwood Drive	1969						2007		2007				
53 Whitney Memorial (1)	1529 Northway Dr	1933	1990	1990	1990	1990	1990			Yes	Yes			
	1529 Northway Dr	2016	2016					2016						
54 Wilson	625 Riverside Dr NE	1921	2007	2007	2007	2007	2007			Yes	Yes			
55 Woodland Hills	1705 Maple Lane	1964		2004	2004		2004							

2017 VEHICLE & EQUIPMENT INVENTORY

<u>UNIT NO.</u>	<u>DESCRIPTION</u>	<u>MODEL YEAR</u>
<u>Vehicles</u>		
1	Int. 1/2 Ton Flatbed	1946
3	Ford 9000 Log Truck	1991
4	Dodge 1 Ton Dump	2002
5	Chevrolet 1 Ton Flatbed Dump	1992
6	Ford F250 Crew Cab	2000
7	Chevrolet C 60 Dump	1987
8	Chevrolet 2500 Pickup	2000
9	GMC Single Axle	1988
10	Chevrolet One Ton	2004
11	GMC Single Axle	1988
12	International 4700 dump truck	2000
13	International 4700LP dump truck	1997
14	Chevrolet 1500 pickup	2004
15	Chevrolet 2500HD pickup	2012
16	Chevrolet 3500	1998
17	Chevrolet 2500HD	2004
18	Chevrolet ½ Ton Pickup	1990
19	Ford ½ Ton Pickup	2002
20	Dodge ½ ton Pickup	2001
21	Ford ½ Ton Pickup	1995
22	Ford ½ Ton Pickup	1996
23	International 4900 Water Truck	2001
24	Chevrolet 3500 Dump	1993
25	Ford ½ ton Pickup	1995
26	Inter 4200 w/ Versalift 60 ft	2004
28	Chevrolet 3500 Dump	1997
29	International Garbage Truck	2000
30	Chevrolet 3500 Service Body	2005
31	Chevrolet 2500 HD Pickup	2001
32	Chevrolet 2500 HD Crew-Cab	2016
33	Ford ½ Ton Pickup	2002
34	Chevrolet 3500 Crew Cab Dump	1994
35	Chevrolet 3500 Crew Cab Dump	1994
36	GMC K3500 Dump	2001
37	Chevrolet 3500HD dump	2015
44	Ford F150 Pickup	2007
45	Ford Ranger Pickup	2000
46	Ford Van	1992
47	Ford Explorer	2000
48	Ford F150 Pickup	2007
50	Ford Escape	2010

<u>UNIT NO.</u>	<u>DESCRIPTION</u>	<u>MODEL YEAR</u>
	<u>Tractors</u>	
74	John Deere 5420	2003
76	Wacker Neuson WL37 Loader	2014
77	New Holland & Attachments	2004
79	John Deere Front End Loader	2000
82	John Deere 2025R	2015
83	John Deere 2520	2011
84	John Deere 2520 & Attachments	2012
85	Bobcat S-185	2010
86	AMT John Deere	1987
87	Bobcat S-590	2014
88	Bobcat Toolcat	2009
90	Kubota RTV 500	2012
91	Kubota RTV 900	2012
93	John Deere Gator	2015
95	John Deere Gator	2013
96	John Deere Gator	2014
97	John Deere Gator	2014
98	John Deere Gator	2011
99	John Deere Gator	2007
100	John Deere Gator	2010
	<u>Mowers</u>	
101	ExMark Z 52"	2017
102	ExMark Z 72"	2017
104	Proline 52" Toro	2003
106	ExMark Z 52"	2015
108	72" ExMark	2012
109	72" Toro Z Master 72"	2002
110	ExMark Z 72"	2014
111	72" ExMark	2004
112	72: Toro Z Master KEFI	2011
113	72" ExMark Z	2012
114	Toro 4000 D Ground Master	2004
115	72" Toro Z Master	2002
116	72" Toro Z Master	2002
117	72" Toro Z Master	2004
118	72" Toro Z Master	2004
119	ExMark Z 52"	2004
120	ExMark Z 72"	2014
122	72" ExMark Z	2011
123	72" ExMark Z	2012
125	72" ExMark Z	2012
126	72" Toro Z Master	2005
127	50" ExMark Z	2008
129	72" ExMark Z	2015

General Park Information Matrix

St. Cloud, MN
As of April 9, 2018

Name	Address	Type	Acre	Year	Band Concert	Baseball	Basketball	Bike BMX	Boat Access	Canoe Access	X-Ctry Skiing	Disc Golf	Exercise Trails	Gardens, Veg.	Disc Golf	Hockey	Ice Skating	Picnic Table & Grill	Picnic Table w/Roof	Park Shelter	Play Equip	Restrooms	Soccer	Softball	Wading Pool	Tennis	Volleyball	Wading Pool	Pickleball	Skate Plaza	Dog Parks	Splash Pad	Winter Sliding		
Angushire	4101 S 4 St. S	Mini	0.66	1997																															
Aurora	1532 N 31 Ave	Mini	0.45	1985																															
Amblewood Park	C.R. 120 & Amblewood Drive	Undeveloped-Neighborhood	4.16	2002																															
Barden	720 S 5 Ave	Neighborhood	2.50	1855																															
Barthelemy Oak Forest	24th St. So. & C.R. 136	Undeveloped-Natural	17.00	1999																															
BBC	171 N 37 Ave	Mini	0.50	2008																															
Beaver Island Park	1503 S 3 Ave	Regional	18.02	1956																															
Beaver Island Trail	LNR from Dam S 2.5 mi	Regional	28.75	1991																															
Black Walnut	5850 Spruce St	Mini	0.66	1997																															
Boulder Ridge Trail	Along and East of CR74	Trail Corridor Only	1.31	2001																															
Butler	312 5 Ave. N	Mini	0.43	2016																															
Calvary Hill	1800 S 17 St	Community	23.22	1928																															
Case's River	1350 Cty Rd 134	Undeveloped-Natural	0.80	1995																															
Centennial	1725 Centennial Dr	Community	12.50	1956																															
Central	2807 N 4 St	Mini	1.64	1887																															
Chantry	4108 Otley Rd	Neighborhood	4.00	1995																															
Cherry	701 47 Ave NE	Neighborhood	6.23	2004																															
Cimarron	Crescent Ridge Trail	Neighborhood	8.41	1997																															
Clemens Gardens	1301 Kilian Blvd	Regional		1989																															
Colonial Gardens	45 S 22 Ave	Mini	0.72	1919																															
Concord	3108 Walden Way	Neighborhood	7.00	1995																															
Cooper Hills/Oaks	2051 S 30 St.	Neighborhood	37.00	1997																															
Country Club	Montrose Rd	Undeveloped	9.00	1975																															
Crestview	1859 Haller Way	Neighborhood	3.10	1995																															
DJ Voth	3625 Greenway Rd	Mini	0.80	1995																															
Deer Creek	Deer Creek Outlot on 33 St. S	Undeveloped-Neighborhood	6.50	2011																															
Diocese	3150 Maine Prairie Rd	Neighborhood	5.88	1994																															
Dwyer	4017 24 St. S.	Undeveloped-Mini	2.00	2002																															
Eastman	425 E Lake Blvd	Regional	25.65	1906																															
Edgewater Estates	4390 Clearwater Rd	Undeveloped-Natural	5.57	1997																															
George Friedrich	2351 University Dr. SE	Regional	50.00	2015																															
Glenview	5750 Glenview Lane	Undeveloped-Mini	2.47	2002																															
Goldthorpe	10 SE 12 Ave.	Mini	0.69	1987																															
Graystone Trail (Jail Trail)	1999 15 Ave. SE	Special Use																																	
Greenway Trail	Connects N. Jr. High & Whit. Pk	Neighborhood	3.62	1985																															
Heritage	225 S 33 Ave	Regional	92.5	1979																															
Heritage Woods Preserve	2231 Orchid Loop S.	Undeveloped-Natural	34.6	2004																															
Hester	1020 N 6 Ave	Community	12.82	1910																															

General Park Information Matrix

St. Cloud, MN
As of April 9, 2018

Name	Address	Type	Acre	Year	Band Concert	Baseball	Basketball	Bike BMX	Boat Access	Canoe Access	X-Ctry Skiing	Disc Golf	Exercise Trails	Gardens, Veg.	Disc Golf	Hockey	Ice Skating	Picnic Table & Grill	Picnic Table w/Roof	Park Shelter	Play Equip	Restrooms	Soccer	Softball	Wading Pool	Tennis	Volleyball	Wading Pool	Pickleball	Skate Plaza	Dog Parks	Splash Pad	Winter Sliding	
Hidden Oaks	2821 S 21 Ave	Mini	1.5	1995																														
Hwy/Carlin	2300 W Saint Germain	Neighborhood	3.20	1981																														
Javic	2801 Atwood Dr	Undeveloped-Natural	3.31	1995																														
Jaycees	1111 N 37 Ave	Neighborhood	4.86	1969																														
Kiwanis	1985 SE 15 Ave	Neighborhood	2.40	1994																														
Knights of Columbus	715 N 54 Ave	Community	9.71	1959																														
Lansing	Next to Beaver Island Trail	Undeveloped-Neighborhood	15.60	1994																														
Lions	2902 N 7 St	Mini	0.56	1888																														
Lions II	4310 Dublin Dr.	Neighborhood	1.67	2000																														
Madison	1536 N 31 Ave	Mini	1.74	1972																														
McKinley	1009 McKinley Place S	Neighborhood	3.78	1955																														
Mill Pond	405 29 Ave. SE	Undeveloped-Neighborhood	23.06	2006																														
Munsinger Gardens	1515 Riverside Dr SE	Regional		1922																														
Neenah Creek Regional	3585 CR 136	Undeveloped-Regional	280.00	1999																														
Northway	2450 N 15 St	Neighborhood	5.00	1978																														
Oak	24th SE and CR8	Undeveloped-Mini	1.00	1999																														
Oak Savannah	SE 24th St	Undeveloped-Natural	5.45	1999																														
Orchid	3325 26 Ave. S	Mini	0.72	2004																														
Pantown	2915 N 9 St	Neighborhood	3.59	1941																														
Pineview	6540 Saukview Dr	Regional	40.90	1976																														
Pioneer	2530 Pioneer Lane	Neighborhood	2.53	1997																														
Plum Tree	3601 Plum Creek Dr	Neighborhood	4.00	1995																														
Praire	2125 Cypress Road	Neighborhood	1.55	2001																														
Prairie Rose	1850 Prairie Rose Lane	Undeveloped-Natural	3.00	1995																														
Quail Pond	5605 Spruce Drive	Neighborhood	6.80	2000																														
Railroad	2007 S 11 Ave	Mini	0.74	1972																														
Raymond	320 Raymond Ave NE	Neighborhood	3.00	1975																														
Reach-Up or 10-10	1114 SE 9th Ave	Neighborhood	3.24	1959																														
Ridge Wood	931 Brenda Lee Dr	Neighborhood	4.30	1995																														
River Bluffs Regional	3822 Clearwater Road	Regional	190.00	1999																														
Riverside Regional	1725 Kilian Blvd	Regional	55.72	1910																														

General Park Information Matrix

St. Cloud, MN
As of April 9, 2018

Name	Address	Type	Acre	Year	Band Concert	Baseball	Basketball	Bike BMX	Boat Access	Canoe Access	X-Ctry Skiing	Disc Golf	Exercise Trails	Gardens, Veg.	Disc Golf	Hockey	Ice Skating	Picnic Table & Grill	Picnic Table w/Roof	Park Shelter	Play Equip	Restrooms	Soccer	Softball	Wading Pool	Tennis	Volleyball	Wading Pool	Pickleball	Skate Plaza	Dog Parks	Splash Pad	Winter Sliding		
Rolling Ridge	6630 Kenwood Rd	Neighborhood	9.00	1995																															
Rose Richter	1655 S 38 St	Neighborhood	4.30	1995																															
Rotary	1507 Goettens Way	Neighborhood	5.00	1969																															
Rotary East	901 Michigan Ave SE	Neighborhood	2.02	1976																															
Saukview	530 Saukview Dr.	Undeveloped-Mini	1.52	2006																															
St Cloud M A C	5001 N 8 St	Regional	19.36	1959																															
St. Cloud/Spalt	413 NE 3 Ave	Mini	1.68	1884																															
Scenic River Trail	CR 75 Trail	Regional	34.16	1995																															
Schmidt	751 S 18 St	Neighborhood	5.00	1972																															
Seberger	2001 N 2 St	Neighborhood	3.62	1926																															
Serenity	1601 S 28 St	Undeveloped-Natural	75.00	1995																															
Signal Hills	1800 Oregon Trail	Mini	2.00	1995																															
Southside	805 S 13 St	Neighborhood	4.83	1956																															
Southview 90	6000 N 19 St	Neighborhood	5.00	1995																															
Southwood Heights	3500 S 17 Ave	Neighborhood	2.91	1997																															
Sterling Heights	2420 SE 18 Ave	Undeveloped-Neighborhood	11.22	1996																															
Sunset	1676 Pattison Rd	Undeveloped-Mini	0.40	1995																															
Talahi School	1320 12 Ave SE	Special Use																																	
Tiffany	1824 Meadowrose Blvd.	Neighborhood	5.80	1995																															
Tower Park	SE 20 Ave	Undeveloped-Mini	1.00	1999																															
Triangle	700 N 13 St	Undeveloped-Mini	0.24	1953																															
Vocational	1601 N 8 Ave	Undeveloped-Mini	0.30	1940																															
West River Meadows	1825 Case Lane	Neighborhood	6.01	1995																															
Westwind	1600 Westwind Rd	Neighborhood	18.60	1995																															
Westwood	720 Driftwood Dr	Neighborhood	2.74	1969																															
Westwood Parkway	6401 Westwood Parkway	Neighborhood	81.38	2004																															
Whitney	1529 Northway Dr	Regional	143.50	1933																															
Wilson	625 NE Riverside Dr	Regional	29.60	1921																															
Woodland Hills	1705 Maple Lane	Neighborhood	12.89	1964																															
TOTAL PARK ACRES			1603.17																																
	Undeveloped Park																																		
	Land not owneded by City																																		
Clemens Gardens & Munsinger Gardens acreage is included in Riverside Park's acreage.																																			